

Madison County Board of Commissioners Meeting

10:00 am Tuesday, January 6, 2026, until concluded

First Floor Public Meeting Room
Administrative Office Building, Virginia City, Montana

WebEx Login:

<https://madisoncounty.my.webex.com/madisoncounty.my/j.php?MTID=m41ec260e52fb051a5b5abad7194ef5ac>

Meeting Number: 2557 256 7614 Password: VCMadison

Join by Phone: 1-650-479-3208 Password: 82623476

Press *6 to mute or unmute

Duke Gilman, District 1 Commissioner
Ron Nye, District 2 Commissioner
Bill Todd, District 3 Commissioner, Chairman

CALL TO ORDER, PLEDGE OF ALLEGIANCE, ROLL CALL

PUBLIC COMMENT (PLEASE LIMIT TO 5 MINUTES PER PERSON)

CONSENT AGENDA

- Minutes for December 15, 2025, Work Session Meeting
- Minutes for December 22, 2025 Work Session Meeting
- Minutes for December 22, 2025, Special Meeting
- Minutes for December 23, 2025 Regular Meeting
- Approval of Claims

REPORTS OF COMMITTEES

- None

UNFINISHED BUSINESS

- None

NEW BUSINESS

- Election of the Commission Chairman for 2026
- RESOLUTION 1-2026, A Resolution Setting Mileage Rates for Calendar Year 2026
- RESOLUTION 2-2026, A Resolution Setting Dates for Commission Meetings
- RESOLUTION 3-2026, A Resolution Setting County Office Hours
- RESOLUTION 4-2026, A Resolution Establishing Locations for Posting Public Notice
- RESOLUTION 5-2026, A Resolution Establishing Agenda Items Submission Time Frame
- Bus Barn Contract
- Virginia City Schoolhouse Window Restoration Project - Letter of Support
- FY2026 County Motor Vehicle Graveyard Grant for \$32,548.60
- Approval for the Viewer's Committee to Conduct an Inspection for Alley Closure in Pony, Montana
 - Located in Section 18, T02S, R02W in Block 44, extending between Lots 7, 8, 9, 10, 11, and 12 of the Original Townsite of Pony, Montana
 - Located Between Bridges Add (Harrison), S36, T01 S, R02 W, BLOCK 9, Lots 13-15 and 46 - 48 of the Original Townsite of Pony, Montana

BOARD RENEWALS AND RESIGNATIONS

- Reappoint Steve Burke to the Laurin Cemetery Board
- Reappoint Rita Owens to the Planning Board
- Resignation of Steve Janzen from the Planning Board

ANNOUNCEMENTS AND CALENDARS

Jan 5, 2026 Mental Health Local Advisory 2:00 PM WebEx
Jan 12, 2026 Airport Board Meeting 6:00 PM Annex Building Public Meeting Room
Jan 15, 2026 Safety Committee Meeting 10:00 AM Public Meeting Room
Jan 15, 2026 Solid Waste and Recycling Board Meeting 1:15 PM Annex Building Meeting Room

Jan 22, 2026 Library Board Meeting 9:30 AM Thompson-Hickman Madison County Library
Jan 23, 2026 Housing Advisory Board Meeting 1:00 PM Annex Building Public Meeting Room
Jan 26, 2026 Planning Board Meeting 6:00 PM Annex Building Public Meeting Room
Feb 27, 2026 Senior Citizen Advisory Board 11:00 AM Twin Bridges Senior Center

ADJOURNMENT

**Madison County
Commissioners' Work Session Meeting**

December 15, 2025, 10:00 am Mountain Time until concluded
103 W Wallace St, Virginia City, MT 59755, United States
First Floor Public Meeting Room
Administrative Office Building, Virginia City, Montana

Present:

Duke W. Gilman, Commissioner, District 1
Ron E. Nye, Commissioner, District 2
William A. Todd, Commissioner, District 3, Chairman

In attendance:

Ryan Wolter, IT Support Specialist, administered the Webex connection
Sarah Carlson, Commissioners' / Airport Assistant, was present to take minutes

Attendee List:

Duncan Hedges, Sheriff
Colton Lauer, Madison County Attorney
Joe Brummell, DES
Kristi Millhouse, Finance Director
Hannah Brook, Victims Advocate
Christine Preece, Nursing Home Administrator
Justin Gatewood, Mayor of Virginia City
Mati Bishop, The Madisonian
Josh Margois, NBC Montana
Joanne Galiger, Nursing Home Foundation
Kassie Marsh, TRMCC
Becky Deboer, Sheridan
Bill Buyan, Sheridan
Peggy Buyan, Sheridan
Ted Woirhaye, RVMC
Jessica Jansen, RVMC

1. Call to Order, Pledge of Allegiance, Roll Call

2. Public Comment (Please Limit to 5 Minutes Per Person)

None

3. Report of Committees

3.1. Madison County Courthouse Rehabilitation and Addition

Pat Jacobs from Architecture Trio participated via WebEx. She stated that the drawings are scheduled to be forwarded to the cost estimator this week. An estimated cost is expected from them by the second week of January. Pat is preparing a draft request for the state historic preservation office review for the county's use. Her goal is to have those drawings to them by the end of the week. We have two preliminary color palettes for the finishes; we are currently awaiting the carpet selection. We're still on target to bid in the 1st week of February.

Comment: Jacobs. Discussion: Commissioner Todd, Commissioner Gilman, and Commissioner Nye.

3.2. Payroll Discussion

Commissioner Todd stated that we have identified six distinct errors in the personnel files related to UKG's integration for the nursing home.

Comment: None. Discussion: Commissioner Todd and Commissioner Gilman.

4. Unfinished Business

None

5. New Business

5.1. Bid Opening for Chip Sealing and Pavement Repair

No bids were received for the chip sealing and pavement repair project.

Comment: None. Discussion: Commissioner Todd.

5.2. Satellite Service for Command Vehicle

Joe Brummell of the Madison County DES department came to discuss replacing the county's current satellite system. The original satellite system, the T-100 platform, was purchased with grant funding in 2017. The annual usage fee for that service is \$6,826.80. Joe recommended switching to Starlink. The startup cost is \$229.00, followed by \$65.00 per month, for a total of \$1,980 per year. The Starlink system is smaller, more mobile, and faster.

Comment: Brummell and Hedges. Discussion: Commissioner Todd, Commissioner Gilman.

5.3. Virginia City - Montana Heritage Commission Discussion

Justin Gatewood, the Mayor of Virginia City, addressed concerns about the Department of Commerce's apparent unilateral termination of at least eight leases held by year-round residents in the city. The termination notices vary in notice period, ranging from 21 to 60 days. Virginia City is classified as a Resort City tax community. Seven of the eight affected businesses account for approximately 40% of the city's annual resort tax revenues. The terminated leases were replaced with new lease agreements, which were forwarded to the tenants, resulting in a gross profit margin of 15%. The profit margins for these businesses

generally range from about 3% to 5%. As a result, for every \$10,000 in revenue, these businesses could face a financial shortfall of approximately \$1,000. The town is requesting the Commissioners' support. The Montana Annotated Code states that the lease process is negotiated between the Heritage Commission and the business owner, and those negotiations haven't happened. On Thursday, December 18th at 9:00 pm at the Elks Club, the town of Virginia City will hold an emergency town council meeting to discuss this situation.

Jamie Barta participated via Webex and stated: there is an approximately \$74 million impact on the community derived from all the MHC businesses. Annually, over half a million individuals are attracted to the area, and more than 1,200 jobs are generated. This will have a significant impact on the community. Jamie Barta provided information on Montana's annotated code, which addresses the Heritage Commission and explains its formation. The purpose of the Heritage Commission is to preserve, develop, and manage on behalf of the state properties that possess outstanding historical value, display exceptional qualities worth preserving, and are genuinely representative of the state's culture and history. The Montana Heritage Preservation and Development Commission shall achieve this purpose by managing the properties for which it is responsible in a manner that preserves and protects them. There's also another part of the Montana code that says the commission is attached to the Department of Commerce for administrative purposes only.

Ken Walsh participated via WebEx and concurred with the previous statements from Mayor Gatewood and Jamie Barta. Ken has been in contact with the Department of Commerce and the governor's office. Ken recommended a letter of support for public involvement.

Commissioner Todd announced that the former director is scheduled for sentencing on Wednesday at 10:00 A.M., an event expected to conclude a regrettable chapter in Virginia City. It is hoped that the Department of Commerce will refrain from further instances of collective punishment, as current appearances suggest such actions are occurring.

Commissioner Nye suggested drafting a letter of support for the town and the affected business, which would then be forwarded to both the Governor and the Montana Heritage Commission.

Comment: Gatewood, Barta, Walsh (Webex). Discussion: Commissioner Todd, Commissioner Gilman, and Commissioner Nye.

5.4. Nursing Home Discussion

Kassie Marsh, a resident of Madison County, has articulated concerns regarding the current occupancy rates at the Tobacco Root Mountains Care Center (TRMCC) and the Madison Valley Manor (MVM). Presently, occupancy levels are modest, with 13 residents at TRMCC and 18 at MVM. She has also expressed concerns about the denial of applications to TRMCC. Historically, the assessment of whether applicants were suitable for placement at TRMCC was undertaken by the nursing staff and social workers, with no involvement from the administrator. Kassie also raised concerns about the decrease in staff at TRMCC.

Peggy Buyan, a resident of Madison County, reports that she has heard of 2 residents falling at TRMCC. She also has concerns about Sheridan residents being denied access.

Bill Buyan, a resident of Madison County, raised concerns about admissions denials and staffing issues in the nursing homes, as well as the potential closure of the nursing home if the

number of residents doesn't increase. Bill also commented that he would like to see times back on the agenda.

Ted Woirhaye, the Chief Nursing Officer at Ruby Valley Medical Center, previously worked at TRMCC and said that when he was there, there were 35 residents. Regarding the recent admissions denials, he is aware of 2 cases, and those individuals went to another nursing home. Ted is concerned about staffing at TRMCC.

Becky DeBoer, a resident of Madison County, commented that her mom was a former resident of TRMCC and received the best care there. She is concerned about current staffing issues at the nursing homes.

Jessica Janson is the case manager for the Ruby Valley Medical Center. Requested a guideline for admission to TRMCC and to be able to provide for the community.

Dan Allhands, a resident of Madison County, participated via WebEx and stated that this constitutes a significant aspect of the commissioner's responsibilities and is of considerable importance. This is the reason why voters authorized a 17-mill permanent mill. He proposed providing weekly updates on the status of both nursing homes and recommended that the county consider appointing a second nursing home administrator.

Joanne Galiger of the Nursing Home Foundation raised concerns that staff at the nursing homes are unhappy about coming to work, which will affect the care of residents. She also raised issues with traveling nurses.

Paul Marsh, representing the Nursing Home Foundation, participated via WebEx and said he wishes to echo every concern he has heard. He is concerned about the reduction in staffing and the decline in nursing home residents.

Christine Preece, the Madison County Nursing Home Administrator, said that some individuals were turned away due to their current acuity. The interdisciplinary team includes social services, activities, MDS, and dietary. We review incoming referrals to determine whether we can meet each individual's needs. Currently, if individuals require physical therapy and occupational therapy, TRMCC cannot accept them because Ruby Valley Medical Center cannot provide occupational therapy to TRMCC. There are also issues with needing a contract with a speech therapist. We also can't accept any Medicare Aid residents. In terms of statistics, we do not have many bedsores. Extra training has been provided on Rockhole cushions. Regarding staffing, I need to ensure that the traveling staff are competent. Previous administrations let a lot of things slide. We have many rules. If you can't follow those rules, I'm holding people to the same accountability standard the federal government holds me to because I have a professional license. I don't want my license jeopardized. When evaluating prospective new residents, it is also imperative to consider their use of antipsychotic medication, given that federal regulations have become progressively more stringent. Christy also notes that she loves seeing community involvement at those facilities.

Duncan Hedges, the Sheriff of Madison County, observed that the challenge is a nationwide issue affecting these and other organizations, as all are endeavoring to recruit highly qualified personnel. The task of attracting such candidates remains particularly difficult for our smaller entity agencies.

Commissioner Todd underscored the importance of instituting an admissions guideline for the community. Our main objective is to ensure the continued operation of the facilities and uphold fiscal responsibility. We greatly cherish the community's trust and the contributions made through mill levies, which are vital for our sustainability. Without these funds, the ongoing operation would be unfeasible. It is of utmost importance to ensure that residents in these facilities receive the highest standard of service.

Commissioner Gilman, I apologize for my oversight regarding this matter. I am concerned because relatively few counties continue to operate nursing homes.

Comment: Kassie Marsh, Peggy Buyan, Bill Buyan, Woirhey, Deboer, Janson, Galiger, Preece, and Hedges. Webex Allhands and Paul Marsh. Discussion: None.

5.5. Holiday Party or \$100 Bonus Discussion

The Commissioners deliberated on awarding Madison County employees a bonus of \$100.00 and decided to forgo the holiday appreciation gathering.

Comment: None. Discussion: Commissioner Nye, Commissioner Gilman, and Commissioner Todd.

Adjournment

With no further discussion, the meeting was adjourned at 11:48 am.

The upcoming Commission meeting is scheduled for Monday, December 22, 2025, at 10:00 a.m. in the Public Meeting Room of the Administrative Building in Virginia City, Montana.

Signed:

Date:.....

William A. Todd, Commissioner, Chairman

Date Approved: January 6, 2026

Signed:

Date:.....

Minutes prepared by:

Sarah Carlson, Commissioners' / Airport Assistant

Attest:

Date:.....

Paula McKenzie, Clerk and Recorder, Madison County

**Madison County
Commissioners' Work Session Meeting**

December 22, 2025, 10:00 am Mountain Time until concluded
103 W Wallace St, Virginia City, MT 59755, United States
First Floor Public Meeting Room
Administrative Office Building, Virginia City, Montana

Present:

Duke W. Gilman, Commissioner, District 1
Ron E. Nye, Commissioner, District 2
William A. Todd, Commissioner, District 3, Chairman

In attendance:

Ryan Wolter, IT Support Specialist, administered the Webex connection
Sarah Carlson, Commissioners' / Airport Assistant, was present to take minutes

Attendee List:

Duncan Hedges, Sheriff
Colton Lauer, Madison County Attorney
Kristi Millhouse, Finance Director
Cody Marxer, Planning Director
Craig Schroder, Undersheriff
Joshua Denny, Communications Officer
Jeremiah Theys, Great West Engineering

1. Call to Order, Pledge of Allegiance, Roll Call

2. Public Comment (Please Limit to 5 Minutes Per Person)

Jeremiah Theys from Great West Engineering brought contract documents in that are on tomorrow's agenda. After documents are signed, please mail them back to Great West.

Comment: Theys and Lutgen (WebEx). Discussion: Commissioner Todd.

3. Report of Committees

3.1. Madison County Courthouse Rehabilitation and Addition

Pat Jacobs of Architecture Trio attended via Webex to discuss front-end specifications. These requirements concern logistical considerations for the construction project rather than technical details. As previously indicated, this includes designated locations for transporting parties, trailer

placements, and potential staging areas, along with other logistical arrangements. The 90% drawings have been forwarded to the cost opinion guide. We have received updated finishes for the historic section of the courthouse. All activities remain on schedule for bidding toward the end of January or the beginning of February.

Commissioner Gilman will reach out to the town to determine whether any of these matters require review by the town council.

Comment: Jacobs (WebEx). Discussion: Commissioner Todd and Commissioner Gilman.

3.2. Payroll Discussion

Commissioner Todd observed that discrepancies persist within certain codes in the UKG system. These codes failed to accurately map to Black Mountain, resulting in a payroll issue affecting one paycheck for the nursing homes. Additionally, an error remains in a spreadsheet concerning one or three deputies. Commissioner Todd remains optimistic that the situation is progressively improving.

Comment: None. Discussion: Commissioner Todd and Commissioner Gilman.

3.3. Nursing Home Discussion

Commissioner Gilman noted that he has engaged in further discussions with representatives from TRMCC. Parties on both sides have raised concerns about the decline in figures at TRMCCC. Several individuals have approached with suggestions for improving these figures within the nursing facility. I remain persistently proactive in seeking solutions; however, it is equally important to collaborate with Christy Preece, the Nursing Home Administrator, to implement these initiatives.

Christine Preece, the Nursing Home Administrator of Madison County, reported that TRMCC currently accommodates 13 residents. The facility has readmitted one long-term resident from the hospital. At present, there are no new referrals to TRMCC. As of 18 December, a total of 14 referrals have been received for both facilities. Of these, six originated from hospitals outside the service area, including Billings, Great Falls, and Wolf Point. These individuals present with more severe conditions, including morbid obesity and violent behavior, that fall beyond our scope of services, and we are unable to meet their needs. Historically, following the holiday season, there has been a potential increase in applicant volume. Our criteria for declining patients include financial circumstances, assessed on a case-by-case basis for those with pending Medicaid, as well as clinical severity, including behavioral issues and violence, to ensure the safety of staff and other residents. Morbid obesity, IV medications, traits, and peg tubes are beyond our current capabilities. We are seeking to establish a consistent pool of traveling nurses to support the expansion of our services in these areas. Christine has communicated with the CEO of Ruby Valley Medical, who expressed optimism about adding an occupational therapist after the new year, which will benefit TRMCC. Positions still needing to be filled at TRMCC are the director of nursing and floor nurses (DNA).

Mr. Paul Marsh joined the meeting via WebEx and informed the Commissioners that the Nursing Home MOU is currently pending and awaiting review and feedback from the USDA legal department.

Commissioner Todd inquired about what percentage of people coming in have long-term care insurance.

Comment: Preece and Marsh (WebEx). Discussion: Commissioner Gilman and Commissioner Todd.

4. Unfinished Business

None

5. New Business

5.1. Bridge Inspection Findings - Great West Engineering

- o North Ennis Lake Road Bridge**
- o Waterloo Road Bridge (WL2)**

Jeremiah Theys from Great West Engineering presented a report regarding the inspection of the North Ennis Lake Road Bridge and the Waterloo Road Bridge (WL2). Both structures received a poor assessment, and the county is advised to commence planning for their replacement. Jeremiah and the Commissioner also discussed the evaluation of other bridges in Madison County and MSEP construction funding.

Comment: Theys. Discussion: Commissioner Todd, Commissioner Gilman, and Commissioner Nye.

5.2. Pavilion Project Discussion

Jeremiah Theys of Great West Engineering informed the Commissioner that Craig and Kai, also affiliated with Great West Engineering, will be delivering the Notice of Intent and will notify the Commissioner that Great West Engineering stands prepared to assist in any manner feasible.

Colton Lauer, the Madison County Attorney, informed the commissioner that the one-page contract received lacked sufficient information, including prevailing wages and more accurate dates. Additional provisions that are statutorily required and that would protect the county need to be included in the contract.

Comment: They and Lauer. Discussion: Commissioner Todd, Commissioner Gilman, and Commissioner Nye.

5.3. Bus Barn Contract Discussion

Colton Lauer, the Madison County Attorney, informed the commissioner that the one-page contract received lacked sufficient information, including prevailing wages and more accurate dates. Additional provisions that are statutorily required and that would protect the county need to be included in the contract.

All the Commissioners concurred that the county should adopt a standardized contract that incorporates prevailing wages.

Comment: Theys and Lauer. Discussion: Commissioner Todd, Commissioner Gilman, and Commissioner Nye.

5.4. Canceling Meetings on 12/29 and 12/30

Commissioner Todd addressed the issue of canceling the meetings scheduled for December 29, 2025, and December 30, 2026 meetings.

Comment: None. Discussion: Commissioner Todd, Commissioner Gilman, and Commissioner Nye.

Adjournment

With no further discussion, the meeting was adjourned at 10:51 am.

The upcoming Commission meeting is scheduled for Monday, January 5, 2026, at 10:00 a.m. in the Public Meeting Room of the Administrative Building in Virginia City, Montana.

Signed: **Date:**.....

William A. Todd, Commissioner, Chairman

Date Approved: January 6, 2026

Signed: **Date:**.....

Minutes prepared by:

Sarah Carlson, Commissioners' / Airport Assistant

Attest: **Date:**.....

Paula McKenzie, Clerk and Recorder, Madison County

**Madison County
Commissioners Emergency Meeting**

December 22, 2025, 1:00 am Mountain Time until concluded
103 W Wallace St, Virginia City, MT 59755, United States
First Floor Public Meeting Room
Administrative Office Building, Virginia City, Montana

Present:

Duke W. Gilman, Commissioner District 1
Ronald E. Nye, Commissioner District 2
William A. Todd, Commissioner, District 3, Chairman

In Attendance:

Ryan Wolter, IT Support Specialist, administered the Webex connection
Sarah Carlson, Commissioners' / Airport Assistant, was present to take minutes

Attendee List:

Colton Lauer, Madison County Attorney

1. Call to Order, Pledge of Allegiance, Roll Call

2. Public Comment (Please Limit to 5 Minutes Per Person)

None

3. New Business

3.1. Resolution 67-2025 A Resolution Calling For An Election On The Question Of Whether Properties In The Madison County Portion Of The Big Sky Resort Area District Shall Withdraw From The Madison Valley Hospital District

Colton Lauer, Madison County Attorney, provided background on the Resolution. An election will be held concurrently with the special district election scheduled for 5 May and will be conducted exclusively via mail-in ballots.

RESOLVED: Commissioner Nye moved to approve Resolution 67-2025, A Resolution Calling For An Election On The Question Of Whether Properties In The Madison County Portion Of The Big Sky Resort Area District Shall Withdraw From The Madison Valley Hospital District. Commissioner Gilman seconded the motion.

For: Duke Gilman, Ron Nye. Astained from voting: William Todd. Motion passed.

Comment: Lauer. Discussion: None.

Adjournment

With no further discussion, the meeting was adjourned at 1:03 pm.

The upcoming Regular Commissioner meeting is scheduled for Tuesday, December 23, 2025, at 10:00 am, in the Public Meeting Room of the Administrative Building in Virginia City, Montana.

Signed:
William A. Todd, Commissioner, Chairman
Date Approved: January 6, 2026

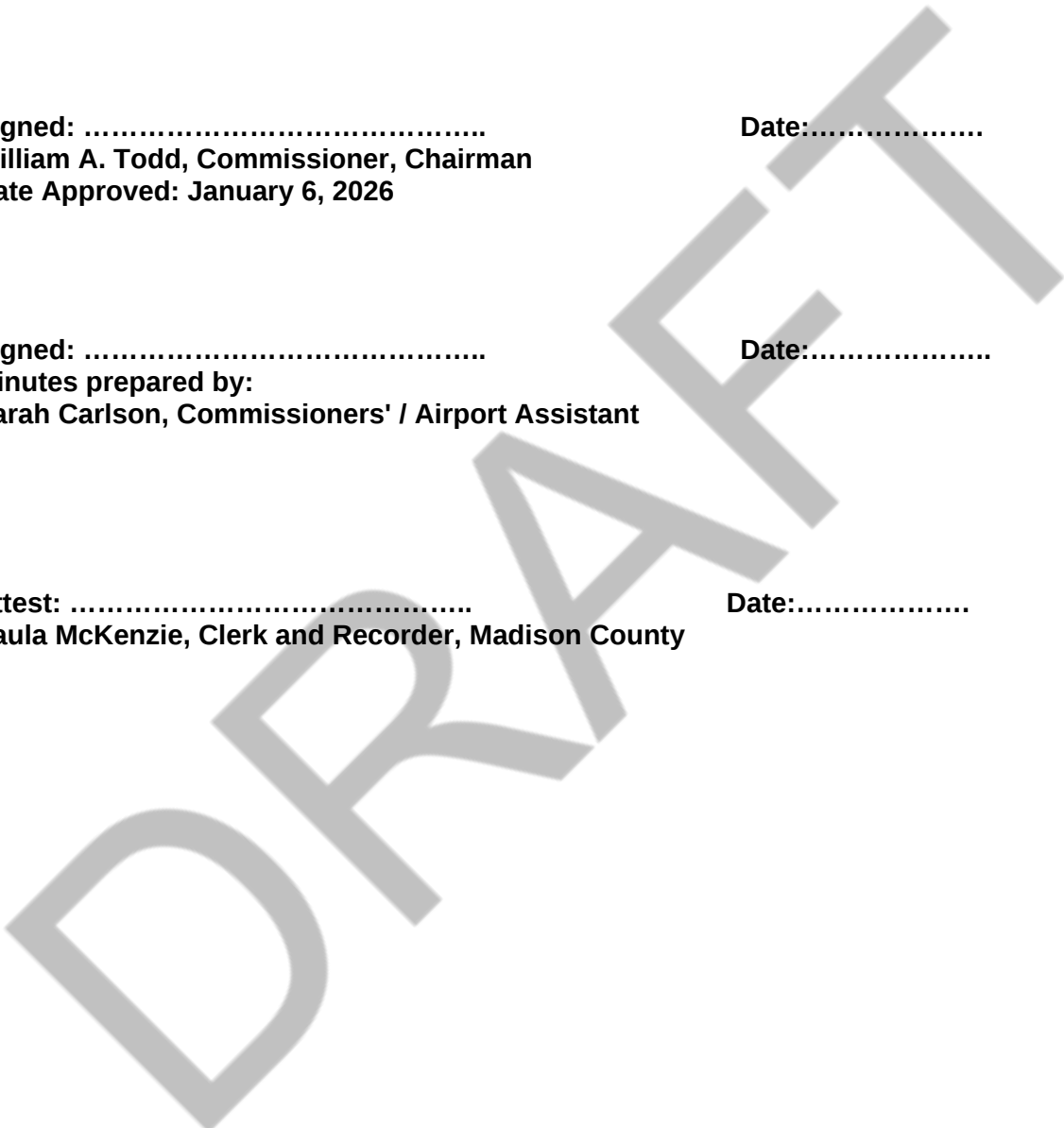
Date:.....

Signed:
Minutes prepared by:
Sarah Carlson, Commissioners' / Airport Assistant

Date:.....

Attest:
Paula McKenzie, Clerk and Recorder, Madison County

Date:.....



Madison County
Commissioners Regular Meeting

December 23, 2025, 10:00 am Mountain Time until concluded
103 W Wallace St, Virginia City, MT 59755, United States
First Floor Public Meeting Room
Administrative Office Building, Virginia City, Montana

Present:

Duke W. Gilman, Commissioner District 1
Ronald E. Nye, Commissioner District 2
William A. Todd, Commissioner, District 3, Chairman

In attendance:

Ryan Wolter, IT Support Specialist, administered the Webex connection
Sarah Carlson, Commissioners' / Airport Assistant, was present to take minutes

Attendee List:

Colton Lauer, Madison County Attorney
Duncan Hedges, Sheriff
Cody Marxer, Planning Director
John Herrington, Planning Technician
Shawna Lutgen, Grants Manager
Kasey Smart, Sanitation

1. Call to Order, Pledge of Allegiance, Roll Call

2. Public Comment (Please Limit to 5 Minutes Per Person)

Commissioner Todd announced that the Madison Valley Little Learner facility for children aged 0 to 3 years will commence operations in mid-January.

Comment: Lutgen. Discussion: Commissioner Todd and Commissioner Gilman.

3. Consent Agenda

3.1. Minutes for December 15, 2025, Work Session

3.2. Minutes for December 16, 2025, Regular Meeting

3.3. Madison Street & TRMCC ADA Upgrades – Contractor Application for Payment #2 and Change Order #1

3.4. AM-22-0323 MAG Fairgrounds Sewer Extension Project Final Report

3.5. AM-22-0323 MAG Fairgrounds Sewer Extension Project Draw Request #4 \$29,735.22

3.6. Twin Bridges Sewer Application for Payment #6 \$95,168.70**3.7. MT-CDBG-24-PF-01 Harrison Wastewater Payment #1 \$4,348.00****3.8. Approval of Claims**

RESOLVED: Commissioner Nye moved to approve the Consent Agenda as read, omitting the December 15, 2025, Work Session minutes. Seconded by Commissioner Gilman.
For: Ron Nye, Duke Gilman, William Todd. Motion passed.

Comment: None. Discussion: None.

4. Reports of Committees

None

5. Unfinished Business

None

6. New Business**6.1. SIA Full Release – Spanish Peaks Resort Highlands West Phase 3 Subdivision**

John Herrington, Madison County Planning Technician, came to request the release of the remaining \$378,236.90 for bond number 1001130688, submitted by Lone Mountain Land Company on December 10, 2025. On-site inspections were conducted on December 11, 2025, to confirm the completion of all improvements.

Recommendation: It is recommended that the Madison County Board of Commissioners: a. Release \$378,236.90 of bond number 1001130688; and b. Sign the release

RESOLVED: Commissioner Nye moved to approve the release of \$378,236.90 of Bond number 1101130688. and to sign the release. SIA Full Release – Spanish Peaks Resort Highlands West Phase 3 Subdivision. Commissioner Gilman seconded the motion.

For: Ron Nye, Duke Gilman, William Todd. Motion passed.

Comment: Herrington. Discussion: None.

6.2. USDA Nursing Home Grant MOU

RESOLVED: Commissioner Nye moved to continue the Nursing Home USDA Grant MOU till the second Tuesday in January. Commissioner Gilman seconded the motion.

For: William Todd, Ron Nye, Duke Gilman. Motion passed.

Comment: None. Discussion: Commissioner Todd.

6.3. Seyler Lane Bridge Replacement - Contract and Notice to Proceed

RESOLVED: Commissioner Nye moved to approve the Seyler Lane Bridge Replacement Contract and Notice to Proceed. Seconded by Commissioner Gilman.
For: William Todd, Ron Nye, Duke Gilman. Motion passed.

Comment: Lutgen. Discussion: Commissioner Todd.

6.4. Fairgrounds Pavilion Task Order

RESOLVED: Commissioner Nye moved to approve the Fairgrounds Pavilion Task Order with Great West Engineering. Commissioner Gilman seconded the motion.
For: William Todd, Ron Nye, Duke Gilman. Motion passed.

Comment: Lutgen. Discussion: Commissioner Todd.

6.5. Resolution 62-2025 A Resolution of intent to revise the Madison County Waste Water Regulations

RESOLVED: Commissioner Nye moved to approve Resolution 62-2025, A Resolution of intent to revise the Madison County Waste Water Regulations. Commissioner Gilman seconded the motion.
For: William Todd, Ron Nye, Duke Gilman. Motion passed.

Comment: None. Discussion: None.

6.6. Resolution 63- 2025 A Resolution of intent to revise the Madison County Waste Water Fee Schedule

RESOLVED: Commissioner Nye moved to approve Resolution 63- 2025, A Resolution of intent to revise the Madison County Waste Water Fee Schedule. Commissioner Gilman seconded the motion.
For: William Todd, Ron Nye, Duke Gilman. Motion passed.

Comment: None. Discussion: None.

6.7. Canceling Meetings on 12/29 and 12/30

RESOLVED: Commissioner Nye moved to cancel the meetings on December 29, 2025, and December 30, 2025. Commissioner Gilman seconded the motion.
For: Ron Nye, William Todd, Duke Gilman. Motion passed.

Comment: None. Discussion: None.

6.8. Reappoint Todd Nelson to the Fair Board

RESOLVED: Commissioner Nye moved to Reappoint Todd Nelson to the Fair Board. Commissioner Gilman seconded the motion.
For: Duke Gilman, Ron Nye, William Todd. Motion passed.

Comment: None. Discussion: None.

Adjournment

With no further discussion, the meeting was adjourned at 10:19 am.

The upcoming Regular Commissioner meeting is scheduled for Tuesday, January 6, 2026, at 10:00 am, in the Public Meeting Room of the Administrative Building in Virginia City, Montana.

Signed:
William A. Todd, Commissioner, Chairman
Date Approved: January 6, 2026

Date:.....

Signed:
Minutes prepared by:
Sarah Carlson, Commissioners' / Airport Assistant

Date:.....

Attest:
Paula McKenzie, Clerk and Recorder, Madison County

Date:.....

DRAFT

Payroll

Check #	Check Type	Vendor/Employee/Payee Number/Name	Check Amount	Period	Date Issued	Notes
-9976582	Pay P	ROAD DEPARTMENT	1948.56	12/25	12/23/25	
-9976581	Pay P	ROAD DEPARTMENT	2005.98	12/25	12/23/25	
65692	Pay P	NURSING HOME	935.21	1/26	12/30/25	
149182	Clm SC	4981 316 SOLUTIONS	105.28	12/25	12/22/25	CL136402 105.28
149183	Clm SC	963 A & M FIRE AND SAFETY, INC	476.85	12/25	12/22/25	CL136387 476.85
149184	Clm SC	541 A. M. WELLES, INC	295.87	12/25	12/22/25	CL136340 295.87
149185	Clm SC	5139 AMAZON CAPITAL SERVICES	2024.81	12/25	12/22/25	CL136329 893.58, CL136331 1131.23
149186	Clm SC	3550 AMERIGAS	2064.80	12/25	12/22/25	CL136399 2064.80
149187	Clm SC	1501 AVAILITY/REALMED	79.00	12/25	12/22/25	CL136339 79.00
149188	Clm SC	2283 B & D KEYLOCK	55.00	12/25	12/22/25	CL136380 55.00
149189	Clm SC	1830 BEACON BUSINESS CENTER	50.00	12/25	12/22/25	CL136322 15.00, CL136381 35.00
149190	Clm SC	151 BEAVERHEAD COUNTY SHERIFF'S OFFIC	4691.50	12/25	12/22/25	CL136373 4691.50
149191	Clm SC	3344 BEST RATE TOWING & REPAIR	282.18	12/25	12/22/25	CL136371 282.18
149192	Clm SC	2498 BILLION CHRYSLER DODGE JEEP RAM	91129.40	12/25	12/22/25	CL136346 91129.40
149193	Clm SC	4163 CORE & MAIN	3560.26	12/25	12/22/25	CL136398 3560.26
149194	Clm SC	6542 DAVID & BRIDGET SHIFFER	1023.52	12/25	12/22/25	CL136394 1023.52
149195	Clm SC	4904 DBT TRANSPORTATION SERVICES, LLC	2641.62	12/25	12/22/25	CL136341 2641.62
149196	Clm SC	2657 DENNIS K SACRY, D.D.S.,PC	471.10	12/25	12/22/25	CL136370 471.10
149197	Clm SC	5695 DEX IMAGING	1124.47	12/25	12/22/25	CL136344 981.14, CL136405 143.33
149198	Clm SC	59 DIRECT SUPPLY	435.99	12/25	12/22/25	CL136379 435.99
149199	Clm SC	2784 DIRECT TV	121.99	12/25	12/22/25	CL136375 121.99
149200	Clm SC	1109 ELECTION SYSTEMS & SOFTWARE INC	1769.37	12/25	12/22/25	CL136390 1589.37, CL136391 180.00
149201	Clm SC	4155 ENCOUNTER TELEHEALTH, LLC	375.00	12/25	12/22/25	CL136359 375.00
149202	Clm SC	169 ENNIS ACE HARDWARE	160.68	12/25	12/22/25	CL136350 84.72, CL136406 15.98, CL136410
149203	Clm SC	267 ENNIS AUTO PARTS INC.	16.00	12/25	12/22/25	CL136333 16.00
149204	Clm SC	5551 ENNIS BUILDING CENTER	175.96	12/25	12/22/25	CL136351 173.18, CL136400 2.78
149205	Clm SC	5063 FUSION MEDICAL STAFFING, LLC	14131.90	12/25	12/22/25	CL136321 2436.50, CL136361 11695.40
149206	Clm SC	3969 GREAT AMERICA FINANCIAL SERVICES	240.27	12/25	12/22/25	CL136326 240.27
149207	Clm SC	4445 JS CREATIVE ENTERPRISES, LLC	750.00	12/25	12/22/25	CL136325 750.00
149208	Clm SC	5474 KELLEY CREATE	430.77	12/25	12/22/25	CL136320 99.43, CL136403 331.34
149209	Clm SC	1078 KINGS MOTEL LLC	3289.99	12/25	12/22/25	CL136319 3289.99
149210	Clm SC	3300 LOCAL GOVERNMENT INFORMATION TEC	100.00	12/25	12/22/25	CL136324 100.00
149211	Clm SC	1712 MAC's PHARMACY	43.30	12/25	12/22/25	CL136362 43.30
149212	Clm SC	192 MACo	244.80	12/25	12/22/25	CL136374 244.80
149213	Clm SC	757 MACo PCT	603.00	12/25	12/22/25	CL136388 603.00
149214	Clm SC	1047 MADISON FOODS	129.22	12/25	12/22/25	CL136334 129.22
149215	Clm SC	86 MADISON VALLEY MEDICAL CENTER	338.94	12/25	12/22/25	CL136376 313.94, CL136386 25.00
149216	Clm SC	5437 MADISON VALLEY PHARMACY	646.71	12/25	12/22/25	CL136378 646.71
149217	Clm SC	5721 MADISON VALLEY PROPERTY MANAGEME	9225.00	12/25	12/22/25	CL136377 9225.00
149218	Clm SC	84 MADISONIAN INC	1066.00	12/25	12/22/25	CL136328 1066.00
149219	Clm SC	6543 MARGARET CHAIKA	2184.00	12/25	12/22/25	CL136393 2184.00
149220	Clm SC	4751 MASTERCARD ACCT 7408	503.10	12/25	12/22/25	CL136369 503.10
149221	Clm SC	4788 MASTERCARD ACCT 9254	269.48	12/25	12/22/25	CL136414 269.48
149222	Clm SC	5525 MASTERCARD ACCT 9341	2074.00	12/25	12/22/25	CL136415 2074.00
149223	Clm SC	6243 MEDICAL SOLUTIONS, LLC	15838.25	12/25	12/22/25	CL136318 4809.00, CL136357 11029.25
149224	Clm SC	94 MEDLINE INDUSTRIES LP	1483.66	12/25	12/22/25	CL136317 891.75, CL136356 591.91
149225	Clm SC	3289 MONIDA HEALTHCARE STAFFING SOLUTI	1434.81	12/25	12/22/25	CL136316 1434.81
149226	Clm SC	2637 MONTANA ASSOCIATION OF CLERK & RE	675.00	12/25	12/22/25	CL136338 675.00
149227	Clm SC	1658 MONTANA ENERGY ALLIANCE, LLC	469.53	12/25	12/22/25	CL136383 469.53
149228	Clm SC	5646 MONTANA HEALTH NETWORK LIABILITY	4131.25	12/25	12/22/25	CL136315 4131.25
149229	Clm SC	5646 MONTANA HEALTH NETWORK LIABILITY	7964.76	12/25	12/22/25	CL136360 7964.76
149230	Clm SC	1030 MONTANA STOCKGROWERS ASSOCIATIOI	6367.00	12/25	12/22/25	CL136335 6367.00
149231	Clm SC	744 MONTANA WOOLGROWERS ASSN	396.50	12/25	12/22/25	CL136336 396.50
149232	Clm SC	5099 MOUNTAIN MEDICAL STAFFING	13330.04	12/25	12/22/25	CL136314 640.85, CL136355 12689.19
149233	Clm SC	403 MOUNTAIN WEST AUTOMOTIVE	214.20	12/25	12/22/25	CL136411 214.20
149234	Clm SC	67 MSU EXTENSION SERVICE	3272.00	12/25	12/22/25	CL136416 3272.00
149235	Clm SC	6487 NEXUS CPA GROUP	15543.00	12/25	12/22/25	CL136408 15543.00
149236	Clm SC	3312 NOACK MECHANIX, LLC	329.50	12/25	12/22/25	CL136372 329.50
149237	Clm SC	5837 NORTHWEST RESPIRATORY SERVICES, L	3212.58	12/25	12/22/25	CL136396 3212.58
149238	Clm SC	1503 NORTHWESTERN ENERGY	9176.78	12/25	12/22/25	CL136308 9176.78
149239	Clm SC	3293 OSTLUND'S FIRE PROTECTION, INC.	800.00	12/25	12/22/25	CL136313 800.00
149240	Clm SC	3516 PAM BIRKELAND	393.40	12/25	12/22/25	CL136309 393.40
149241	Clm SC	5448 PEOPLE 2.0 GLOBAL	13128.08	12/25	12/22/25	CL136310 13128.08
149242	Clm SC	6433 PHARMERICA	36.36	12/25	12/22/25	CL136382 36.36
149243	Clm SC	4008 PointClickCare TECHNOLOGIES INC.	4062.52	12/25	12/22/25	CL136368 4062.52
149244	Clm SC	5345 PRECISION LAWN AND SNOW SVC. LLC	3733.43	12/25	12/22/25	CL136363 3733.43
149245	Clm SC	6541 PRO SHREDDERS	180.00	12/25	12/22/25	CL136395 180.00
149246	Clm SC	3587 PRODUCTIVITY PLUS ACCOUNT	269.32	12/25	12/22/25	CL136384 269.32
149247	Clm SC	4728 PROFESSIONAL TRAVELERS INC.	4551.96	12/25	12/22/25	CL136353 3093.07, CL136354 1458.89
149248	Clm SC	5647 RANDI BRADDOCK	42.00	12/25	12/22/25	CL136392 42.00
149249	Clm SC	6540 ROCKY MOUNTAIN PRINT SOLUTIONS	704.24	12/25	12/22/25	CL136332 704.24

Account No	Account Type	Description	Amount	Period	Period	CL	Value	Other
149250	Clm SC	2300 RUBY VALLEY AVIATION	100.00	12/25	12/22/25	CL136327	22500.00	
149251	Clm SC	255 SHELLY BURKE	74.76	12/25	12/22/25	CL136342	100.00	
149252	Clm SC	1907 SHERIDAN AUTO PARTS INC.	261.61	12/25	12/22/25	CL136389	74.76	
149253	Clm SC	6036 STAPLES	2731.14	12/25	12/22/25	CL136413	261.61	
149254	Clm SC	3706 TELE SYSTEM SERVICES LLC	48.00	12/25	12/22/25	CL136312	487.40, CL136347	644.14, CL136407
149255	Clm SC	1851 THE CHEMNET CONSORTIUM	435.00	12/25	12/22/25	CL136417	48.00	
149256	Clm SC	3597 THREE RIVERS COMMUNICATIONS	2019.40	12/25	12/22/25	CL136330	435.00	
149257	Clm SC	2917 TIFCO INDUSTRIES, INC	250.71	12/25	12/22/25	CL136343	2019.40	
149258	Clm SC	1726 TIM'S DIESEL & AUTO REPAIR INC	4351.42	12/25	12/22/25	CL136401	250.71	
149259	Clm SC	443 TITAN INC.	800.00	12/25	12/22/25	CL136412	4351.42	
149260	Clm SC	307 TOWN OF ENNIS	1535.34	12/25	12/22/25	CL136397	800.00	
149261	Clm SC	128 TOWN OF SHERIDAN	882.63	12/25	12/22/25	CL136367	1535.34	
149262	Clm SC	129 TOWN OF VIRGINIA CITY	1297.29	12/25	12/22/25	CL136337	882.63	
149263	Clm SC	420 TRACTOR & EQUIPMENT CO.	630.95	12/25	12/22/25	CL136358	1297.29	
149264	Clm SC	5361 US. FOODS	5397.12	12/25	12/22/25	CL136352	630.95	
149265	Clm SC	5656 VALERIE LINSOTT	1800.00	12/25	12/22/25	CL136311	1974.56, CL136366	3422.56
149266	Clm SC	539 VIGILANTE ELECTRIC COOP	137.29	12/25	12/22/25	CL136323	1800.00	
149267	Clm SC	10 WALTER'S ACE HARDWARE	406.07	12/25	12/22/25	CL136409	137.29	
149268	Clm SC	4059 WIPFLI LLP	3552.50	12/25	12/22/25	CL136348	390.89, CL136404	15.18
149269	Clm SC	2597 YELLOWSTONE DEVELOPMENT	10483.34	12/25	12/22/25	CL136365	3552.50	
149271	Clm SC	5112 AFLAC	593.23	12/25	12/22/25	CL136364	10483.34	
149272	Clm C	VOID PRINTING ERROR	0.00	12/25	12/30/25	CL136418	593.23	
149273	Clm C	VOID PRINTING ERROR	0.00	12/25	12/30/25			
149274	Clm C	VOID PRINTING ERROR	0.00	12/25	12/30/25			
149275	Clm C	VOID PRINTING ERROR	0.00	12/25	12/30/25			
149276	Clm C	VOID PRINTING ERROR	0.00	12/25	12/30/25			
149277	Clm C	VOID PRINTING ERROR	0.00	12/25	12/30/25			
149278	Clm C	VOID PRINTING ERROR	0.00	12/25	12/30/25			
149279	Clm C	VOID PRINTING ERROR	0.00	12/25	12/30/25			
149280	Clm C	VOID PRINTING ERROR	0.00	12/25	12/30/25			
149281	Clm C	VOID PRINTING ERROR	0.00	12/25	12/30/25			
149282	Clm C	VOID PRINTING ERROR	0.00	12/25	12/30/25			
149283	Clm C	VOID PRINTING ERROR	0.00	12/25	12/30/25			
149284	Clm C	VOID PRINTING ERROR	0.00	12/25	12/30/25			
149285	Clm C	VOID PRINTING ERROR	0.00	12/25	12/30/25			
149286	Clm C	VOID PRINTING ERROR	0.00	12/25	12/30/25			
149287	Clm C	VOID PRINTING ERROR	0.00	12/25	12/30/25			
149288	Clm C	VOID PRINTING ERROR	0.00	12/25	12/30/25			
149289	Clm C	VOID PRINTING ERROR	0.00	12/25	12/30/25			
149290	Clm C	VOID PRINTING ERROR	0.00	12/25	12/30/25			
149291	Clm C	VOID PRINTING ERROR	0.00	12/25	12/30/25			
149292	Clm C	VOID PRINTING ERROR	0.00	12/25	12/30/25			
149293	Clm C	VOID PRINTING ERROR	0.00	12/25	12/30/25			
149294	Clm C	VOID PRINTING ERROR	0.00	12/25	12/30/25			
149295	Clm C	VOID PRINTING ERROR	0.00	12/25	12/30/25			
149296	Clm C	VOID PRINTING ERROR	0.00	12/25	12/30/25			
149297	Clm C	VOID PRINTING ERROR	0.00	12/25	12/30/25			
149298	Clm C	VOID PRINTING ERROR	0.00	12/25	12/30/25			
149299	Clm C	VOID PRINTING ERROR	0.00	12/25	12/30/25			
149300	Clm C	VOID PRINTING ERROR	0.00	12/25	12/30/25			
149301	Clm C	VOID PRINTING ERROR	0.00	12/25	12/30/25			
149302	Clm C	VOID PRINTING ERROR	0.00	12/25	12/30/25			
149303	Clm C	VOID PRINTING ERROR	0.00	12/25	12/30/25			
149304	Clm C	VOID PRINTING ERROR	0.00	12/25	12/30/25			
149305	Clm C	VOID PRINTING ERROR	0.00	12/25	12/30/25			
149306	Clm C	VOID PRINTING ERROR	0.00	12/25	12/30/25			
149307	Clm C	VOID PRINTING ERROR	0.00	12/25	12/30/25			
149308	Clm C	VOID PRINTING ERROR	0.00	12/25	12/30/25			
149309	Clm C	VOID PRINTING ERROR	0.00	12/25	12/30/25			
149310	Clm C	VOID PRINTING ERROR	0.00	12/25	12/30/25			
149311	Clm C	VOID PRINTING ERROR	0.00	12/25	12/30/25			
149312	Clm C	VOID PRINTING ERROR	0.00	12/25	12/30/25			
149313	Clm C	VOID PRINTING ERROR	0.00	12/25	12/30/25			
149314	Clm C	VOID PRINTING ERROR	0.00	12/25	12/30/25			
149315	Clm C	VOID PRINTING ERROR	0.00	12/25	12/30/25			
149316	Clm C	VOID PRINTING ERROR	0.00	12/25	12/30/25			
149317	Clm C	VOID PRINTING ERROR	0.00	12/25	12/30/25			
149318	Clm C	VOID PRINTING ERROR	0.00	12/25	12/30/25			
149319	Clm C	VOID PRINTING ERROR	0.00	12/25	12/30/25			
149320	Clm C	VOID PRINTING ERROR	0.00	12/25	12/30/25			
149321	Clm C	VOID PRINTING ERROR	0.00	12/25	12/30/25			
149322	Clm C	VOID PRINTING ERROR	0.00	12/25	12/30/25			
149323	Clm C	VOID PRINTING ERROR	0.00	12/25	12/30/25			
149324	Clm C	VOID PRINTING ERROR	0.00	12/25	12/30/25			
149325	Clm C	VOID PRINTING ERROR	0.00	12/25	12/30/25			
149326	Clm C	VOID PRINTING ERROR	0.00	12/25	12/30/25			
149327	Clm C	VOID PRINTING ERROR	0.00	12/25	12/30/25			

149328	Clm C	VOID PRINTING ERROR	0.00	12/25	12/30/25		
149329	Clm C	VOID PRINTING ERROR	0.00	12/25	12/30/25		
149330	Clm C	VOID PRINTING ERROR	0.00	12/25	12/30/25		
149331	Clm C	VOID PRINTING ERROR	0.00	12/25	12/30/25		
149332	Clm C	VOID PRINTING ERROR	0.00	12/25	12/30/25		
149333	Clm C	VOID PRINTING ERROR	0.00	12/25	12/30/25		
149334	Clm C	VOID PRINTING ERROR	0.00	12/25	12/30/25		
149335	Clm C	VOID PRINTING ERROR	0.00	12/25	12/30/25		
149336	Clm C	VOID PRINTING ERROR	0.00	12/25	12/30/25		
149337	Clm C	VOID PRINTING ERROR	0.00	12/25	12/30/25		
149338	Clm C	VOID PRINTING ERROR	0.00	12/25	12/30/25		
149339	Clm C	VOID PRINTING ERROR	0.00	12/25	12/30/25		
149340	Clm SC	94 MEDLINE INDUSTRIES LP	3910.13	12/25	12/30/25	CL136486	3910.13
149341	Clm SC	6243 MEDICAL SOLUTIONS, LLC	1854.00	12/25	12/30/25	CL136487	1854.00
149342	Clm SC	774 GRAINGER Dept.838234854	108.33	12/25	12/30/25	CL136488	108.33
149343	Clm SC	5139 AMAZON CAPITAL SERVICES	154.59	12/25	12/30/25	CL136489	154.59
149344	Clm SC	94 MEDLINE INDUSTRIES LP	1185.83	12/25	12/30/25	CL136490	1185.83
149345	Clm SC	1724 GREAT WEST ENGINEERING, INC.	45194.40	12/25	12/30/25	CL136491	45194.40
149346	Clm SC	5099 MOUNTAIN MEDICAL STAFFING	11217.92	12/25	12/30/25	CL136492	11217.92
149347	Clm SC	6248 MOUNTAIN VIEW CONSTRUCTION, LLC	570.00	12/25	12/30/25	CL136493	570.00
149348	Clm SC	5549 NETSMART TECHNOLOGIES, INC	115.64	12/25	12/30/25	CL136494	115.64
149349	Clm SC	4728 PROFESSIONAL TRAVELERS INC.	7629.49	12/25	12/30/25	CL136495	7629.49
149350	Clm SC	307 TOWN OF ENNIS	150.00	12/25	12/30/25	CL136496	150.00
149351	Clm SC	5362 US. FOODS	2161.30	12/25	12/30/25	CL136497	2161.30
149352	Clm SC	5448 PEOPLE 2.0 GLOBAL	9394.25	12/25	12/30/25	CL136498	9394.25
149353	Clm SC	5551 ENNIS BUILDING CENTER	2.78	12/25	12/30/25	CL136500	2.78
149354	Clm SC	5783 ZOE LEE	185.50	12/25	12/30/25	CL136501	185.50
149355	Clm SC	3550 AMERIGAS	265.02	12/25	12/30/25	CL136503	265.02
149356	Clm SC	1591 L&J PLUMBING & IN-FLOOR HEATING T	7559.83	12/25	12/30/25	CL136504	7559.83
149357	Clm SC	1658 MONTANA ENERGY ALLIANCE, LLC	1565.87	12/25	12/30/25	CL136505	1565.87
149358	Clm SC	419 TOWN OF TWIN BRIDGES	1642.71	12/25	12/30/25	CL136506	1642.71
149359	Clm SC	3706 TELE SYSTEM SERVICES LLC	48.00	12/25	12/30/25	CL136507	48.00
149360	Clm SC	5389 DEMCO INC.	94.67	12/25	12/30/25	CL136508	94.67
149361	Clm SC	5474 KELLEY CREATE	303.85	12/25	12/30/25	CL136509	303.85
149362	Clm SC	174 GENERAL DISTRIBUTING CO	722.69	12/25	12/30/25	CL136510	722.69
149363	Clm SC	4252 TEZAK SUPPLY COMPANY	25.99	12/25	12/30/25	CL136511	25.99
149364	Clm SC	267 ENNIS AUTO PARTS INC.	14.98	12/25	12/30/25	CL136512	14.98
149365	Clm SC	1325 ACTION HYDRAULIC & MACHINE SHOP,	2375.00	12/25	12/30/25	CL136513	2375.00
149366	Clm SC	6547 ASSESSMENT & PSYCHOTHERAPY SERVIC	1500.00	12/25	12/30/25	CL136514	1500.00
149367	Clm SC	1322 ROCKY MOUNTAIN SUPPLY INC	3505.20	12/25	12/30/25	CL136516	3505.20
149368	Clm SC	5600 ROCKY MOUNTAIN SUPPLY, INC	44.18	12/25	12/30/25	CL136517	44.18
149369	Clm SC	4252 TEZAK SUPPLY COMPANY	29.98	12/25	12/30/25	CL136518	29.98
149370	Clm SC	5651 DPHHS-EHFS	225.00	12/25	12/30/25	CL136519	225.00
149371	Clm SC	5139 AMAZON CAPITAL SERVICES	107.59	12/25	12/30/25	CL136520	107.59
149372	Clm SC	4665 AG-NEWS	129.00	12/25	12/30/25	CL136521	129.00
149373	Clm SC	6549 SOUTHWEST MONTANA	95.00	12/25	12/30/25	CL136522	95.00
149374	Clm SC	163 D & D NAPA AUTO PARTS	454.41	12/25	12/30/25	CL136523	454.41
149375	Clm SC	3710 SHI INTERNATIONAL CORP	328.00	12/25	12/30/25	CL136525	328.00
149376	Clm SC	1799 SMA	6819.90	12/25	12/30/25	CL136527	6819.90
149377	Clm SC	6524 MADISON VALLEY TIRE LLC	27.50	12/25	12/30/25	CL136528	27.50
149378	Clm SC	3312 NOACK MECHANIX, LLC	379.50	12/25	12/30/25	CL136529	379.50
149379	Clm SC	5655 RADIO TIME BILLING	227.00	12/25	12/30/25	CL136530	227.00
149380	Clm SC	4083 AXON ENTERPRISE, INC.	20069.60	12/25	12/30/25	CL136531	20069.60
149381	Clm SC	5065 T-MOBILE	806.40	12/25	12/30/25	CL136532	806.40
149382	Clm SC	5065 T-MOBILE	1196.88	12/25	12/30/25	CL136533	1196.88
149383	Clm SC	6500 DECKED, LLC	3365.98	12/25	12/30/25	CL136534	3365.98
149384	Clm SC	1886 SIRCHIE AQUISITION COMPANY LLC	95.20	12/25	12/30/25	CL136535	95.20
149385	Clm SC	3803 DIS TECHNOLOGIES	109.99	12/25	12/30/25	CL136536	109.99
149386	Clm SC	1828 CENTURY LINK	774.09	12/25	12/30/25	CL136537	774.09
149387	Clm SC	5019 EQUATURE	19712.84	12/25	12/30/25	CL136538	19712.84
149388	Clm SC	5769 NENA	299.00	12/25	12/30/25	CL136539	299.00
149389	Clm SC	2176 MONTANA LAW ENFORCEMENT ACADEM	451.00	12/25	12/30/25	CL136540	451.00
149390	Clm SC	752 GALLATIN COUNTY SHERIFF	7762.30	12/25	12/30/25	CL136542	7762.30
149391	Clm SC	86 MADISON VALLEY MEDICAL CENTER	25.00	12/25	12/30/25	CL136543	25.00
149392	Clm SC	5361 US. FOODS	158.49	12/25	12/30/25	CL136544	158.49
149393	Clm SC	5063 FUSION MEDICAL STAFFING, LLC	3655.00	12/25	12/30/25	CL136545	3655.00
149394	Clm SC	5448 PEOPLE 2.0 GLOBAL	6946.98	12/25	12/30/25	CL136546	6946.98
149395	Clm SC	4336 WALTERS FAMILY FOODS	57.97	12/25	12/30/25	CL136547	57.97
149396	Clm SC	5361 US. FOODS	1711.32	12/25	12/30/25	CL136548	1711.32
149397	Clm SC	6036 STAPLES	801.19	12/25	12/30/25	CL136549	801.19
149398	Clm SC	1907 SHERIDAN AUTO PARTS INC.	14.49	12/25	12/30/25	CL136550	14.49
149399	Clm SC	5099 MOUNTAIN MEDICAL STAFFING	3486.58	12/25	12/30/25	CL136551	3486.58
149400	Clm SC	94 MEDLINE INDUSTRIES LP	871.14	12/25	12/30/25	CL136552	871.14
149401	Clm SC	5549 NETSMART TECHNOLOGIES, INC	119.00	12/25	12/30/25	CL136553	119.00
149402	Clm SC	5646 MONTANA HEALTH NETWORK LIABILITY	1825.00	12/25	12/30/25	CL136554	1825.00
149403	Clm SC	6243 MEDICAL SOLUTIONS, LLC	2647.50	12/25	12/30/25	CL136556	2647.50
149404	Clm SC	6223 HILLYARD	385.38	12/25	12/30/25	CL136557	385.38
149405	Clm SC	59 DIRECT SUPPLY	368.00	12/25	12/30/25	CL136558	368.00
149406	Clm SC	4904 DBT TRANSPORTATION SERVICES, LLC	5768.00	12/25	12/30/25	CL136559	5768.00

149408	Clm SC	5719 KENDALL FORD OF BOZEMAN	180.95	12/25	12/30/25	CL135887	4660.10
149409	Clm SC	3515 NORTHWEST PARTS & EQUIPMENT	40.70	12/25	12/30/25	CL135990	180.95
149410	Clm SC	169 ENNIS ACE HARDWARE	111.87	12/25	12/30/25	CL136026	40.70
149411	Clm SC	6521 ANDREW FISHER	784.00	12/25	12/30/25	CL136063	111.87
149412	Clm SC	6520 44 WATERCRESS LANE, LLC	1250.00	12/25	12/30/25	CL136073	784.00
149413	Clm SC	86 MADISON VALLEY MEDICAL CENTER	25.00	12/25	12/30/25	CL136074	1250.00
149414	Clm SC	5448 PEOPLE 2.0 GLOBAL	5828.36	12/25	12/30/25	CL136385	25.00
149415	Clm SC	5579 INOVALON PROVIDER, INC	441.14	12/25	12/30/25	CL136419	5828.36
149416	Clm SC	5579 INOVALON PROVIDER, INC	6.62	12/25	12/30/25	CL136420	441.14
149417	Clm SC	6223 HILLYARD	186.51	12/25	12/30/25	CL136421	6.62
149418	Clm SC	6223 HILLYARD	1970.32	12/25	12/30/25	CL136422	186.51
149419	Clm SC	2539 HEADS UP IRRIGATION, INC	95.00	12/25	12/30/25	CL136423	1970.32
149420	Clm SC	5063 FUSION MEDICAL STAFFING, LLC	2445.00	12/25	12/30/25	CL136424	95.00
149421	Clm SC	4689 FISHER'S TECHNOLOGY	136.90	12/25	12/30/25	CL136425	2445.00
149422	Clm SC	4324 ARJO INC.	70.21	12/25	12/30/25	CL136426	136.90
149423	Clm SC	5139 AMAZON CAPITAL SERVICES	31.49	12/25	12/30/25	CL136427	70.21
149424	Clm SC	5139 AMAZON CAPITAL SERVICES	29.98	12/25	12/30/25	CL136428	31.49
149425	Clm SC	5139 AMAZON CAPITAL SERVICES	702.08	12/25	12/30/25	CL136429	29.98
149426	Clm SC	5362 US. FOODS	1449.17	12/25	12/30/25	CL136430	702.08
149427	Clm SC	6036 STAPLES	65.49	12/25	12/30/25	CL136431	1449.17
149428	Clm SC	1849 PRAIRIE TRAVELERS, INC.	10887.64	12/25	12/30/25	CL136432	65.49
149429	Clm SC	5099 MOUNTAIN MEDICAL STAFFING	9896.46	12/25	12/30/25	CL136433	10887.64
149430	Clm SC	6027 WILLIAMS CIVIL CONSTRUCTION	273298.71	12/25	12/30/25	CL136434	9896.46
149431	Clm SC	1381 MONTANA DEPARTMENT OF REVENUE	2760.59	12/25	12/30/25	CL136435	273298.71
149432	Clm SC	6027 WILLIAMS CIVIL CONSTRUCTION	95168.70	12/25	12/30/25	CL136436	2760.59
149433	Clm SC	1381 MONTANA DEPARTMENT OF REVENUE	961.30	12/25	12/30/25	CL136437	95168.70
149434	Clm SC	3884 RICH EBERLINE	1250.00	12/25	12/30/25	CL136438	961.30
149435	Clm SC	5680 RING CENTRAL, INC	17575.75	12/25	12/30/25	CL136439	1250.00
149436	Clm SC	2279 FULL CIRCLE TIRE	54.50	12/25	12/30/25	CL136440	17575.75
149437	Clm SC	6316 KRONOS SAASHR, INC	32.80	12/25	12/30/25	CL136443	54.50
149438	Clm SC	4728 PROFESSIONAL TRAVELERS INC.	6095.68	12/25	12/30/25	CL136445	32.80
149439	Clm SC	6461 KBI PROPERTIES	2500.00	12/25	12/30/25	CL136446	6095.68
149440	Clm SC	3797 BOB MANNERS	250.00	12/25	12/30/25	CL136447	2500.00
149441	Clm SC	1739 BEAVERHEAD GLASS	115.00	12/25	12/30/25	CL136448	250.00
149442	Clm SC	3289 MONIDA HEALTHCARE STAFFING SOLUTI	3329.29	12/25	12/30/25	CL136449	115.00
149443	Clm SC	94 MEDLINE INDUSTRIES LP	844.39	12/25	12/30/25	CL136450	3329.29
149444	Clm SC	6243 MEDICAL SOLUTIONS, LLC	7073.20	12/25	12/30/25	CL136451	844.39
149445	Clm SC	5721 MADISON VALLEY PROPERTY MANAGEME	4950.00	12/25	12/30/25	CL136452	7073.20
149446	Clm SC	946 JOHNSON CONTROLS INC	8362.28	12/25	12/30/25	CL136453	4950.00
149447	Clm SC	5579 INOVALON PROVIDER, INC	441.14	12/25	12/30/25	CL136454	8362.28
149448	Clm SC	98 MOUNTAIN BUILDING CENTER	128.02	12/25	12/30/25	CL136455	441.14
149449	Clm SC	4252 TEZAK SUPPLY COMPANY	329.99	12/25	12/30/25	CL136456	128.02
149450	Clm SC	1907 SHERIDAN AUTO PARTS INC.	2047.74	12/25	12/30/25	CL136457	329.99
149451	Clm SC	6003 STRAIGHT LINE CONTRACTING	6536.34	12/25	12/30/25	CL136459	2047.74
149452	Clm SC	420 TRACTOR & EQUIPMENT CO.	1312.72	12/25	12/30/25	CL136460	6536.34
149453	Clm SC	267 ENNIS AUTO PARTS INC.	199.28	12/25	12/30/25	CL136461	1312.72
149454	Clm SC	6545 Jonathan or Amy Gallen	16886.13	12/25	12/30/25	CL136462	199.28
149455	Clm SC	5509 YELLOWSTONE NEWS GROUP	180.00	12/25	12/30/25	CL136464	16886.13
149456	Clm SC	86 MADISON VALLEY MEDICAL CENTER	201.00	12/25	12/30/25	CL136465	180.00
149457	Clm SC	5448 PEOPLE 2.0 GLOBAL	5828.36	12/25	12/30/25	CL136466	201.00
149458	Clm SC	2630 SOLV BUSINESS SOLUTIONS	581.60	12/25	12/30/25	CL136467	5828.36
149459	Clm SC	5361 US. FOODS	279.00	12/25	12/30/25	CL136468	581.60
149460	Clm SC	6412 NOVICH PROPERTY MANAGEMENT, LLC	74.25	12/25	12/30/25	CL136469	279.00
149461	Clm SC	94 MEDLINE INDUSTRIES LP	805.22	12/25	12/30/25	CL136470	74.25
149462	Clm SC	2325 AMERICAN WELDING & GAS, INC.	39.13	12/25	12/30/25	CL136471	805.22
149463	Clm SC	6546 LOGANSIMPSON	3705.00	12/25	12/30/25	CL136472	39.13
149464	Clm SC	2570 MADISON COUNTY MOTOR VEHICLE	49.44	12/25	12/30/25	CL136473	3705.00
149465	Clm SC	67 MSU EXTENSION SERVICE	3272.00	12/25	12/30/25	CL136474	49.44
149466	Clm SC	3738 DE LAGE LANDEN FINANCIAL SVC, INC	488.61	12/25	12/30/25	CL136476	3272.00
149467	Clm SC	5139 AMAZON CAPITAL SERVICES	291.51	12/25	12/30/25	CL136477	488.61
149468	Clm SC	4689 FISHER'S TECHNOLOGY	13.11	12/25	12/30/25	CL136478	291.51
149469	Clm SC	5063 FUSION MEDICAL STAFFING, LLC	3021.00	12/25	12/30/25	CL136479	13.11
149470	Clm SC	3969 GREAT AMERICA FINANCIAL SERVICES	69.50	12/25	12/30/25	CL136480	3021.00
149471	Clm SC	5604 PATTY WELCH	180.00	12/25	12/30/25	CL136481	69.50
149472	Clm SC	1825 HIGH COUNTRY NUTRITION	320.00	12/25	12/30/25	CL136482	180.00
149473	Clm SC	6527 LAWLESS CONSULTING SERVICES LLC	519.00	12/25	12/30/25	CL136483	320.00
149474	Clm SC	6243 MEDICAL SOLUTIONS, LLC	9763.50	12/25	12/30/25	CL136484	519.00
149475	Clm SC	6243 MEDICAL SOLUTIONS, LLC	9763.50	12/25	12/30/25	CL136485	9763.50
149476	Clm SC	5139 AMAZON CAPITAL SERVICES	670.74	12/25	01/02/26	CL136555	9763.50
149477	Clm SC	3550 AMERIGAS	922.37	12/25	01/02/26	CL136556	670.74
149478	Clm SC	5623 BADLANDS MEDICAL STAFFING	4017.60	12/25	01/02/26	CL136594	922.37
149479	Clm SC	3688 D&D TIRE SUPPLY	488.00	12/25	01/02/26	CL136595	4017.60
149480	Clm SC	169 ENNIS ACE HARDWARE	611.43	12/25	01/02/26	CL136596	488.00
149481	Clm SC	5063 FUSION MEDICAL STAFFING, LLC	1821.00	12/25	01/02/26	CL136349	45.15, CL136566
149482	Clm SC	6223 HILLYARD	103.38	12/25	01/02/26	CL136567	1821.00
149483	Clm SC	2347 LEONA STREDWICK	70.00	12/25	01/02/26	CL136568	103.38
149484	Clm SC	84 MADISONIAN INC	130.00	12/25	01/02/26	CL136569	70.00
149485	Clm SC	5817 MASTERCARD ACCT 0585	166.94	12/25	01/02/26	CL136593	130.00
						CL136588	166.94

149486	Clm SC	5870 MASTERCARD ACCT 2395	756.63	12/25	01/02/26	CL136581	210.00
149487	Clm SC	5083 MASTERCARD ACCT 2604	34.18	12/25	01/02/26	CL136586	756.63
149488	Clm SC	5706 MASTERCARD ACCT 4979	3.27	12/25	01/02/26	CL136584	34.18
149489	Clm SC	5502 MASTERCARD ACCT 5050	398.06	12/25	01/02/26	CL136583	3.27
149490	Clm SC	5590 MASTERCARD ACCT 5350	541.16	12/25	01/02/26	CL136580	398.06
149491	Clm SC	4751 MASTERCARD ACCT 7408	181.18	12/25	01/02/26	CL136582	541.16
149492	Clm SC	4503 MASTERCARD ACCT 9043	414.31	12/25	01/02/26	CL136561	181.18
149493	Clm SC	4788 MASTERCARD ACCT 9254	4.04	12/25	01/02/26	CL136578	414.31
149494	Clm SC	5525 MASTERCARD ACCT 9341	213.91	12/25	01/02/26	CL136590	4.04
149495	Clm SC	5534 MASTERCARD ACCT 9374	262.88	12/25	01/02/26	CL136589	213.91
149496	Clm SC	6243 MEDICAL SOLUTIONS, LLC	2625.95	12/25	01/02/26	CL136587	262.88
149497	Clm SC	94 MEDLINE INDUSTRIES LP	1036.16	12/25	01/02/26	CL136570	2625.95
149498	Clm SC	2698 MENDENHALL EQUIPMENT CO.	107.14	12/25	01/02/26	CL136571	1036.16
149499	Clm SC	3289 MONIDA HEALTHCARE STAFFING SOLUTI	4874.97	12/25	01/02/26	CL136572	107.14
149500	Clm SC	876 MONTANA DEPARTMENT OF ADMINISTRA	2500.00	12/25	01/02/26	CL136573	4874.97
149501	Clm SC	5099 MOUNTAIN MEDICAL STAFFING	20950.49	12/25	01/02/26	CL136579	2500.00
149502	Clm SC	2444 NASCO	272.15	12/25	01/02/26	CL136574	20950.49
149503	Clm SC	5448 PEOPLE 2.0 GLOBAL	8296.50	12/25	01/02/26	CL136275	272.15
149504	Clm SC	295 QUILL LLC	69.99	12/25	01/02/26	CL136577	8296.50
149505	Clm SC	2300 RUBY VALLEY AVIATION	12000.00	12/25	01/02/26	CL136575	69.99
149506	Clm SC	5065 T-MOBILE	1008.74	12/25	01/02/26	CL136591	12000.00
149507	Clm SC	5362 US. FOODS	1615.87	12/25	01/02/26	CL136345	1008.74
149508	Clm SC	TOTAL CLAIMS	1122750.51			CL136576	1615.87

Commissioner Signature _____

Date _____

Commissioner Signature _____

Date _____



12/30/25
13:56:43

MADISON COUNTY
Claim Approval List
For the Accounting Period: 12/25

Page: 1 of 28
Report ID: AP100V

* ... Over spent expenditure

Claim/	Check	Vendor #/Name/ Invoice #/Inv Date/Description	Document \$/ Line \$	Disc \$	PO #	Fund Org Acct	Object	Proj	Cash Account
*** Claim from another period (11/25) ****									
136074		6520 44 WATERCRESS LANE, LLC	1,250.00						
		Reissued check under the name of WatercressLane, LLC - was Warm Springs Ranch							
		11/18/25 REIMBURSEMENT 50% COST SHARE	1,250.00			2140 431100	399		101000
		Total for Vendor:	1,250.00						
136513		1325 ACTION HYDRAULIC & MACHINE SHOP,	2,375.00						
		11/05/25 Solid Waste Repairs	2,375.00			5410 430840	362		101000
		1769							
		Total for Vendor:	2,375.00						
136521		4665 AG-NEWS	129.00						
		12/11/25 Sheriffs	129.00			2300 420110	330		101000
		20635							
		Total for Vendor:	129.00						
136428		5139 AMAZON CAPITAL SERVICES	31.49						
		12/15/25 MVM- OFFICE SUPPLIES	31.49			5110 440310	214		101000
		17WM-4YM6-MMNX							
136429		5139 AMAZON CAPITAL SERVICES	29.98						
		12/08/25 MVM- DIETARY FOOD	29.98			5110 440340	223		101000
		17VR-1RJQ-JQ44							
136430		5139 AMAZON CAPITAL SERVICES	702.08						
		12/11/25 MVM- DINING SUPPLIES	85.41			5110 440340	229		101000
		17TX-9NRN-JRM9							
		12/10/25 MVM- DIETARY	14.69			5110 440340	223		101000
		13PW-LYVQ-GY3H							
		12/10/25 MVM - OFFICE	69.65			5110 440310	214		101000
		11DR-GKJH-L9C9							
		12/11/25 MVM- PATIENT SUPPLIES	106.00			5110 440330	232		101000
		1YNC-GMQ1-L676							
		12/13/25 MVM- DINING SUPPLIES	22.99*			5110 440330	229		101000
		1YVX-WC69-T1TP							
		12/10/25 MVM- MEDICAL SUPPLIES	103.81			5110 440330	240		101000
		1YCT-1M4J-JHL4							

12/30/25
13:56:43

MADISON COUNTY
Claim Approval List
For the Accounting Period: 12/25

Page: 3 of 28
Report ID: AP100V

* ... Over spent expenditure

Claim/	Check	Vendor #/Name/ Invoice #/Inv Date/Description	Document \$/ Line \$	Disc \$	PO #	Fund Org Acct	Object	Proj	Cash Account
	11/19/25	PUBLIC HEALTH - BLOOD DRIVE	9.46*			2973 440100	229		101000
		1YLH-31MQ-MMNH							
		Total for Vendor:	1,317.24						
136472		2325 AMERICAN WELDING & GAS, INC.	39.13						
	11/30/25	ACETYLENE	39.13			2110 430201	229		101000
		0011291544							
		Total for Vendor:	39.13						
136503		3550 AMERIGAS	265.02						
		111 E WALLACE							
	12/16/25	PROPANE SITE 103792951	265.02			1000 410700	366		101000
		3184574246							
		Total for Vendor:	265.02						
		*** Claim from another period (11/25) ****							
136073		6521 ANDREW FISHER	784.00						
		REIMBURSEMENT 50% COST SHARE	784.00			2140 431100	399		101000
		Total for Vendor:	784.00						
136427		4324 ARJO INC.	70.21						
	11/04/25	MVM - Supplies	70.21*			5110 440330	229		101000
		6892290548							
		Total for Vendor:	70.21						
136514		6547 ASSESSMENT & PSYCHOTHERAPY	1,500.00						
	12/19/25	MCAO- EVALUATION DC-29-25-9	1,500.00			1000 411100	357		101000
		MCAO DC29-25-9							
		Total for Vendor:	1,500.00						
136531		4083 AXON ENTERPRISE, INC.	20,069.60						
	12/15/25	Sheriff - TASERS	20,069.60			2300 420110	212		101000
		INUS403788							
		Total for Vendor:	20,069.60						

12/30/25
13:56:43

MADISON COUNTY
Claim Approval List
For the Accounting Period: 12/25

Page: 4 of 28
Report ID: AP100V

* ... Over spent expenditure

Claim/	Check	Vendor #/Name/ Invoice #/Inv Date/Description	Document \$/ Line \$	Disc \$	PO #	Fund Org Acct	Object	Proj	Cash Account
136449		1739 BEAVERHEAD GLASS	115.00						
		11/18/25 MACHINERY REPAIR	115.00			2110 430201	362		101000
	315945								
		Total for Vendor:	115.00						
136448		3797 BOB MANNERS	250.00						
		Beaver Trappings - VARNEY BRIDGE - District 3							
		12/17/25 Road 3 - Beaver Trap	250.00			2110 430203	357		101000
		BEAVER TRAP							
		Total for Vendor:	250.00						
136537		1828 CENTURY LINK	774.09						
		12/08/25 DISPATCH ACCT#406247245	774.09			2850 420160	345		101000
		Total for Vendor:	774.09						
136523		163 D & D NAPA AUTO PARTS	454.41						
		11/24/25 Sheriff - Repairs	400.00			2300 420110	309		101000
	028491								
		12/12/25 SHERIFF - SUPPLIES	15.83			2300 420110	361		101000
	029040								
		12/19/25 SHERIFF - SUPPLIES	30.58			2300 420110	361		101000
	029252								
		12/24/25 LATE FEE	8.00			2300 420110	229		101000
	122425								
		Total for Vendor:	454.41						
136559		4904 DBT TRANSPORTATION SERVICES, LLC	5,768.00						
		07/01/25 ENNIS/BIG SKY AIRPORT SERVICES	5,768.00			2170 430320	357		101000
	90179329								
		Total for Vendor:	5,768.00						
136477		3738 DE LAGE LANDEN FINANCIAL SVC,	488.61						
		12/07/25 MVM - Copier Lease	488.61			5110 440320	531		101000
	593519059								
		Total for Vendor:	488.61						

12/30/25
13:56:43

MADISON COUNTY
Claim Approval List
For the Accounting Period: 12/25

Page: 5 of 28
Report ID: AP100V

* ... Over spent expenditure

Claim/	Check	Vendor #/Name/ Invoice #/Inv Date/Description	Document \$/ Line \$	Disc \$	PO #	Fund Org Acct	Object	Proj	Cash Account
136534		6500 DECKED, LLC	3,365.98						
	12/17/25	Drawer System	2,879.98			2300 420110	362		101000
		INV12745655803							
	12/16/25	DRAWER LOCKS	486.00			2300 420110	362		101000
		INV12745655459							
		Total for Vendor:	3,365.98						
136508		5389 DEMCO INC.	94.67						
	12/10/25	Library - Supplies	94.67			2220 460100	229		101000
		INV40296969							
		Total for Vendor:	94.67						
136558		59 DIRECT SUPPLY	368.00						
	12/19/25	TRMCC - MAINTENANCE	368.00			5111 440320	362		101000
		34982184							
		Total for Vendor:	368.00						
136536		3803 DIS TECHNOLOGIES	109.99						
	12/19/25	UPS BACKUP	109.99			2300 420601	229		101000
		17894							
		Total for Vendor:	109.99						
136519		5651 DPHHS-EHFS	225.00						
		RIVERS EDGE CAMPGROUND LICENSE 2026							
	12/23/25	FAIR - 2026 CAMPGROUND LICENSE	225.00			2160 460240	229		101000
		CL16367							
		Total for Vendor:	225.00						
		*** Claim from another period (11/25) ****							
136063		169 ENNIS ACE HARDWARE	111.87						
	10/23/25	Road 3 - Supplies	111.87			2110 430203	229		101000
		355235							
		Total for Vendor:	111.87						

12/30/25
13:56:43

MADISON COUNTY
Claim Approval List
For the Accounting Period: 12/25

Page: 6 of 28
Report ID: AP100V

* ... Over spent expenditure

Claim/	Check	Vendor #/Name/ Invoice #/Inv Date/Description	Document \$/ Line \$	Disc \$	PO #	Fund Org Acct	Object	Proj	Cash Account
136462		267 ENNIS AUTO PARTS INC.	199.28						
	03360078972	12/11/25 Sollid Waste - parts	27.98			5410 430840	229		101000
	03360078985	12/11/25 Solid Waster - parts	19.47			5410 430840	229		101000
	03360078594	12/01/25 Solid Waste - Parts	16.98			5410 430840	229		101000
	03360078593	12/01/25 SOLID WASTER PARTS	134.85			5410 430840	229		101000
136512		267 ENNIS AUTO PARTS INC.	14.98						
	03360079221	12/18/25 Sollid Waste - parts	14.98			5410 430840	231		101000
		Total for Vendor:	214.26						
136500		5551 ENNIS BUILDING CENTER	2.78						
	7005-3284174	12/16/25 RD 3 ELECTRICAL SUPPLIES	2.78			2110 430203	229		101000
		Total for Vendor:	2.78						
136538		5019 EQUATURE	19,712.84						
	INV0030086	12/19/25 911 - SW Contract	19,712.84			2850 420160	397		101000
		Total for Vendor:	19,712.84						
136426		4689 FISHER'S TECHNOLOGY	136.90						
	1596069	12/08/25 contract base rate	35.20			5110 440320	364		101000
	1596069	12/08/25 contract overage charge	101.70			5110 440320	364		101000
136479		4689 FISHER'S TECHNOLOGY	13.11						
	1600241	12/15/25 MVM - Copies	13.11			5110 440310	330		101000
		Total for Vendor:	150.01						

12/30/25
13:56:43

MADISON COUNTY
Claim Approval List
For the Accounting Period: 12/25

Page: 7 of 28
Report ID: AP100V

* ... Over spent expenditure

Claim/	Check	Vendor #/Name/ Invoice #/Inv Date/Description	Document \$/ Line \$	Disc \$	PO #	Fund Org Acct	Object	Proj	Cash Account
136443		2279 FULL CIRCLE TIRE	54.50						
	12/23/25	OIL CHANGE	54.50			1000 450400	361		101000
61318									
		Total for Vendor:	54.50						
136425		5063 FUSION MEDICAL STAFFING, LLC	2,445.00						
	12/06/25	MVM- STAFFING - ELLIS	2,445.00			5110 440330	357		101000
		INV925935							
136480		5063 FUSION MEDICAL STAFFING, LLC	3,021.00						
	12/13/25	MVM- STAFFING - ELLIS	3,021.00			5110 440330	357		101000
		INV928928							
136545		5063 FUSION MEDICAL STAFFING, LLC	3,655.00						
	12/20/25	TRMCC - Staffing - Jones	3,069.00			5111 440330	357		101000
		INV931995							
	12/20/25	TRMCC - Staffing - Noble	586.00			5111 440330	357		101000
		INV931994							
		Total for Vendor:	9,121.00						
136542		752 GALLATIN COUNTY SHERIFF	7,762.30						
	12/18/25	Detention - Inmate Housing	7,762.30			2300 420230	392		101000
		NOV 2025							
		Total for Vendor:	7,762.30						
136510		174 GENERAL DISTRIBUTING CO	722.69						
	12/05/25	Solid Waste - WELD SUPPLIES	580.13			5410 430840	229		101000
		0001579933							
	11/30/25	Solid Waster - Cylinders	142.56			5410 430840	229		101000
		0001577040							
		Total for Vendor:	722.69						
136488		774 GRAINGER Dept.838234854	108.33						
	12/19/25	MVM - Supplies	108.33*			5110 440320	229		101000
		9749185345							
		Total for Vendor:	108.33						

12/30/25
13:56:43

MADISON COUNTY
Claim Approval List
For the Accounting Period: 12/25

Page: 9 of 28
Report ID: AP100V

* ... Over spent expenditure

Claim/	Check	Vendor #/Name/ Invoice #/Inv Date/Description	Document \$/ Line \$	Disc \$	PO #	Fund Org Acct	Object	Proj	Cash Account
136423		6223 HILLYARD	1,970.32						
	12/15/25	Misc. supplies MVM	1,970.32*			5110 440320	229		101000
		606031150							
136557		6223 HILLYARD	385.38						
	12/23/25	TRMCC - SUPPLIES	197.50			5111 440340	229		101000
		606039733							
	12/15/25	TRMCC - SUPPLIES	187.88			5111 440350	200		101000
		606031242							
		Total for Vendor:	2,542.21						
136420		5579 INOVALON PROVIDER, INC	441.14						
	10/22/25	MVM - SW	441.14			5110 440320	364		101000
		25M-0130085							
136421		5579 INOVALON PROVIDER, INC	6.62						
	11/26/25	MVM- FIN CHG	6.62			5110 440320	364		101000
		FCHRG000000280265							
136455		5579 INOVALON PROVIDER, INC	441.14						
	11/18/25	MVM - SW	441.14			5110 440320	364		101000
		25M-0143698							
		Total for Vendor:	888.90						
136454		946 JOHNSON CONTROLS INC	8,362.28						
	11/25/25	MVM- NO HEAT	1,416.20*			5110 440320	357		101000
		1-136825349364							
	11/18/25	MVM- NEW TSTAT & VALVE PATIENT	5,130.16*			5110 440320	357		101000
		1-136790570469							
	11/18/25	MVM- HVAC MOTOR REPAIR	1,815.92*			5110 440320	357		101000
		1-136647258592							
		Total for Vendor:	8,362.28						

12/30/25
13:56:43

MADISON COUNTY
Claim Approval List
For the Accounting Period: 12/25

Page: 10 of 28
Report ID: AP100V

* ... Over spent expenditure

Claim/	Check	Vendor #/Name/ Invoice #/Inv Date/Description	Document \$/ Line \$	Disc \$	PO #	Fund Org Acct	Object	Proj	Cash Account
136464		6545 Jonathan or Amy Gallen	16,886.13						
	12/22/25	DOR ADJUSTMENT 28800121	16,886.13			7920 202000			101000
		DOR ADJ 28800121							
		Total for Vendor:	16,886.13						
136447		6461 KBI PROPERTIES	2,500.00						
	11/28/25	MVM - Staff Housing	2,500.00*			5110 440330	531		101000
		DEC 2025							
		Total for Vendor:	2,500.00						
136509		5474 KELLEY CREATE	303.85						
	12/22/25	Sanit -Toshiba e STUDIO5525AC	276.23			1000 410700	532		101000
		40863004							
	12/22/25	LATE FEES	27.62			1000 440140	532		101000
		40863004							
		Total for Vendor:	303.85						
		*** Claim from another period (11/25) ****							
135990		5719 KENDALL FORD OF BOZEMAN	180.95						
	11/03/25	Invoice 01CQ2805756	180.95			2300 420110	362		101000
		Total for Vendor:	180.95						
136445		6316 KRONOS SAASHR, INC	32.80						
	12/08/25	IT - UKG Build	32.80			1000 411235	357		101000
		I10080033407							
		Total for Vendor:	32.80						
136504		1591 L&J PLUMBING & IN-FLOOR HEATING	7,559.83						
	12/20/25	COMMISSIONERS HVAC REPAIRS	7,559.83			1000 410700	366		101000
		10891							
		Total for Vendor:	7,559.83						
136484		6527 LAWLESS CONSULTING SERVICES LLC	519.00						
	12/22/25	MVM - PCC REVIEW, GDR UPDATE,	519.00			5110 440330	260		101000
		December 2025							
		Total for Vendor:	519.00						

12/30/25
13:56:43

MADISON COUNTY
Claim Approval List
For the Accounting Period: 12/25

Page: 11 of 28
Report ID: AP100V

* ... Over spent expenditure

Claim/	Check	Vendor #/Name/ Invoice #/Inv Date/Description	Document \$/ Line \$	Disc \$	PO #	Fund Org Acct	Object	Proj	Cash Account
136473		6546 LOGANSIMPSON	3,705.00						
		Sensitive Land Mapping Project - LATCF Funding							
		12/19/25 SENSITIVE LANDS MAPPING	3,705.00*			2992 470210	398		101000
38568									
		Total for Vendor:	3,705.00						
136474		2570 MADISON COUNTY MOTOR VEHICLE	49.44						
		12/24/25 Sherriff 2026 Dodge Durango Wh	24.72			2300 420110	229		101000
		1C4RDJFG1TC174216							
		12/24/25 Sheriff 2026 Ram White	24.72			2300 420110	229		101000
		3C6UR5CJ8TG205145							
		Total for Vendor:	49.44						
136385		86 MADISON VALLEY MEDICAL CENTER	25.00						
		Labs - Detention Center							
		11/20/25 Labs - 60064356	25.00			2300 420230	222		101000
		60064356							
136466		86 MADISON VALLEY MEDICAL CENTER	201.00						
		12/10/25 BRADEN TATE - 7010488	201.00			2300 420110	361		101000
		7010488							
136543		86 MADISON VALLEY MEDICAL CENTER	25.00						
		Labs - Detention Center							
		12/22/25 Labs - 60066197	25.00			2300 420230	222		101000
		60066197							
		Total for Vendor:	251.00						
136453		5721 MADISON VALLEY PROPERTY	4,950.00						
		12/15/25 MVM - JAN 2026 RENT	4,950.00*			5110 440330	531		101000
		MVM25-05							
		Total for Vendor:	4,950.00						

12/30/25
13:56:43

MADISON COUNTY
Claim Approval List
For the Accounting Period: 12/25

Page: 13 of 28
Report ID: AP100V

* ... Over spent expenditure

Claim/	Check	Vendor #/Name/ Invoice #/Inv Date/Description	Document \$/ Line \$	Disc \$	PO #	Fund Org Acct	Object	Proj	Cash Account
136471		94 MEDLINE INDUSTRIES LP	805.22						
	12/20/25	TRMCC - 2403882835	257.41			5111 440330	232		101000
		2403882835							
	12/20/25	TRMCC- 2403882835	333.88			5111 440330	201		101000
		2403882835							
	12/20/25	TRMCC-2403882835	100.22			5111 440330	240		101000
		2403882835							
	12/20/25	TRMCC- 2403882834	2.46			5111 440330	232		101000
		2403882834							
	12/20/25	TRMCC - 2403882834	111.25			5111 440330	201		101000
		2403882834							
136486		94 MEDLINE INDUSTRIES LP	3,910.13						
	03/05/25	MVM- BREIFS	150.60			5110 440330	232		101000
		2360137980							
	03/08/25	MVM - LINERS	34.00			5110 440330	232		101000
		2360811138							
	03/08/25	MVM - PONCHO	138.48*			5110 440320	229		101000
		2360811139							
	03/12/25	MVM- PILLOWCASES	68.68*			5110 440350	229		101000
		2361181441							
	03/13/25	MVM- GLOVES	2,209.30*			5110 440320	229		101000
		2361390811							
	03/13/25	MVM- GLUCOSE STRIP	136.72			5110 440330	232		101000
		2361390812							
	03/15/25	MVM-PENDANT	144.38*			5110 440330	229		101000
		2361745823							
	03/20/25	MVM - SHARP CONTAINERS	20.96*			5110 440330	229		101000
		2362459008							
	03/27/25	MVM- PENDANT BUTION	65.92*			5110 440330	229		101000
		2363588685							
	06/11/25	MVM- GOWNS & GLOVES	941.09			5110 440330	240		101000
		2374559427							

12/30/25
13:56:43

MADISON COUNTY
Claim Approval List
For the Accounting Period: 12/25

Page: 14 of 28
Report ID: AP100V

* ... Over spent expenditure

Claim/	Check	Vendor #/Name/ Invoice #/Inv Date/Description	Document \$/ Line \$	Disc \$	PO #	Fund Org Acct	Object	Proj	Cash Account
136490		94 MEDLINE INDUSTRIES LP	1,185.83						
	06/11/25	MVM- LINERS	186.04			5110 440330	232		101000
2374559428									
	06/11/25	MVM - BRIEFS	191.52			5110 440330	232		101000
2374559429									
	06/11/25	MVM- GLUCOSE STRIPS	136.72			5110 440330	232		101000
2374559431									
	06/11/25	MVM - SHARPS/ALCOHOL PREP	89.21			5110 440330	232		101000
2374559432									
	06/11/25	MVM- CATHETER	71.96*			5110 440330	229		101000
2374559433									
	06/11/25	MVM- TRAY	79.76*			5110 440330	229		101000
2374559434									
	06/11/25	MVM- LINERS	252.34			5110 440330	232		101000
2374559435									
	08/16/25	MVM- BATH TOWELS	150.99*			5110 440320	229		101000
2384558180									
	12/19/25	MVM- UPHOLSTERY	27.29*			5110 440320	229		101000
2403567452									
136552		94 MEDLINE INDUSTRIES LP	871.14						
	12/25/25	TRMCC - PPE	446.45			5111 440330	201		101000
2404539044									
	12/25/25	TRMCC - ANCILLARIES	275.93			5111 440330	232		101000
2404539044									
	12/25/25	TRMCC - MED SUPPLIES	143.28			5111 440330	240		101000
2404539044									
	12/25/25	TRMCC- PPE	5.48			5111 440330	201		101000
2404539043									
		Total for Vendor:	7,616.71						
136450		3289 MONIDA HEALTHCARE STAFFING	3,329.29						
	12/08/25	MVM- RN WAGES	3,180.54			5110 440330	357		101000
10205									
	12/08/25	MVM- RN MILEAGE	148.75*			5110 440330	531		101000
10205									
		Total for Vendor:	3,329.29						

12/30/25
13:56:43

MADISON COUNTY
Claim Approval List
For the Accounting Period: 12/25

Page: 15 of 28
Report ID: AP100V

* ... Over spent expenditure

Claim/	Check	Vendor #/Name/ Invoice #/Inv Date/Description	Document \$/ Line \$	Disc \$	PO #	Fund Org Acct	Object	Proj	Cash Account
136436		1381 MONTANA DEPARTMENT OF REVENUE MADISON STRETT TRMCC ADA IMPROVEMENT PR#2	2,760.59						
		12/17/25 MADISON STRETT TRMCC ADA PR#2	2,760.59*			2990 430246	925		101000
		1& Contractors Gross Rec							
136438		1381 MONTANA DEPARTMENT OF REVENUE TB FAIRGROUNDS SEWER EXTENSION PR6	961.30						
		10/21/25 TB FAIRGROUNDS SEWER EXT PR6	961.30*			2990 430601	925		101000
		1& Contractors Gross Rec							
		Total for Vendor:	3,721.89						
136505		1658 MONTANA ENERGY ALLIANCE, LLC 12/15/25 ENNIS-BIG SKY AIRPORT	1,565.87						
		U0285855	1,565.87			2170 430320	349		101000
		Total for Vendor:	1,565.87						
136554		5646 MONTANA HEALTH NETWORK LIABILITY 12/23/25 TRMCC - CNA STAFF	1,825.00						
		1058	1,825.00			5111 440330	357		101000
		Total for Vendor:	1,825.00						
136540		2176 MONTANA LAW ENFORCEMENT ACADEMY 12/16/25 CORONER TRAINING	451.00						
		25445	300.00			2300 420800	381		101000
		12/18/25 CORONER TRAINING	100.00			2300 420800	381		101000
		25466	51.00*			2300 420800	373		101000
		25466							
		Total for Vendor:	451.00						
136456		98 MOUNTAIN BUILDING CENTER 12/09/25 SOLID WASTER SUPPLIES	128.02						
		863092	128.02			5410 430840	229		101000
		Total for Vendor:	128.02						

12/30/25
13:56:43

MADISON COUNTY
Claim Approval List
For the Accounting Period: 12/25

Page: 17 of 28
Report ID: AP100V

* ... Over spent expenditure

Claim/	Check	Vendor #/Name/ Invoice #/Inv Date/Description	Document \$/ Line \$	Disc \$	PO #	Fund Org Acct	Object	Proj	Cash Account
136551		5099 MOUNTAIN MEDICAL STAFFING	3,486.58						
	12/25/25	TRMCC - Staffing - Gray	1,366.88			5111 440330	357		101000
0004070									
	12/25/25	TRMCC - Staff Mileage	139.20*			5111 440330	531		101000
0004070									
	12/25/25	TRMCC - STAFFING - TALKSDIFFER	1,806.50			5111 440330	357		101000
0004070									
	12/25/25	TRMCC- STAFF MILEAGE	174.00*			5111 440330	531		101000
0004070									
		Total for Vendor:	24,600.96						
136493		6248 MOUNTAIN VIEW CONSTRUCTION, LLC	570.00						
	11/14/25	MVM - CONCRETE COURTYARD	570.00*			5110 440320	357		101000
45									
		Total for Vendor:	570.00						
136476		674 MSU EXTENSION	3,272.00						
	12/22/25	Extension - Contract Payments	3,272.00			1000 450400	397		101000
JAN 2026									
		Total for Vendor:	3,272.00						
136539		5769 NENA	299.00						
	12/22/25	Communications - OL Training	299.00*			2850 420160	381		101000
200051750									
		Total for Vendor:	299.00						
136494		5549 NETSMART TECHNOLOGIES, INC	115.64						
	01/01/26	Monthly payment Acct.#1343336	115.64			5110 440310	330		101000
BD0707873									
136553		5549 NETSMART TECHNOLOGIES, INC	119.00						
	01/01/26	TRMCC ACCT#1346407	119.00			5111 440310	330		101000
BD0708869									
		Total for Vendor:	234.64						

12/30/25
13:56:43

MADISON COUNTY
Claim Approval List
For the Accounting Period: 12/25

Page: 19 of 28
Report ID: AP100V

* ... Over spent expenditure

Claim/	Check	Vendor #/Name/ Invoice #/Inv Date/Description	Document \$/ Line \$	Disc \$	PO #	Fund Org Acct	Object	Proj	Cash Account
136419		5448 PEOPLE 2.0 GLOBAL	5,828.36						
	12/12/25	MVM - Travelling Nurse	5,362.50			5110 440330	357		101000
594003956									
	12/12/25	MVM - Travelling Nurse Mileage	465.86*			5110 440330	531		101000
594003956									
136467		5448 PEOPLE 2.0 GLOBAL	5,828.36						
	12/12/25	MVM - Traveling Nurse	5,362.50			5110 440330	357		101000
594003956									
	12/12/25	MVM - Traveling Nurse	465.86*			5110 440330	531		101000
594003956									
136498		5448 PEOPLE 2.0 GLOBAL	9,394.25						
	12/19/25	MVM - Traveling Nurse	5,773.25			5110 440330	357		101000
594003974									
	12/19/25	MVM - Traveling Nurse	561.00*			5110 440330	531		101000
594003974									
	12/19/25	MVM- TRAVELING NURSE	3,060.00*			5110 440330	531		101000
594003984									
136546		5448 PEOPLE 2.0 GLOBAL	6,946.98						
	12/26/25	WAGES- CASTRO	1,347.50			5111 440330	357		101000
594004007									
	12/26/25	MILEAGE - CASTRO	332.40*			5111 440330	531		101000
594004007									
	12/26/25	WAGES - GRIFFITH	990.00			5111 440330	357		101000
594004006									
	12/26/25	MILEAGE - GRIFFITH	257.28*			5111 440330	531		101000
594004006									
	12/26/25	WAGES- VANDERSNICK	2,617.30			5111 440330	357		101000
594004006									
	12/26/25	MILEAGE- VANDERSNICK	180.00*			5111 440330	531		101000
594004006									
	12/26/25	WAGES - WASCO	1,222.50			5111 440330	357		101000
594004006									
Total for Vendor:			32,658.05						

12/30/25
13:56:43

MADISON COUNTY
Claim Approval List
For the Accounting Period: 12/25

Page: 24 of 28
Report ID: AP100V

* ... Over spent expenditure

Claim/	Check	Vendor #/Name/ Invoice #/Inv Date/Description	Document \$/ Line \$	Disc \$	PO #	Fund Org Acct	Object	Proj	Cash Account
136511		4252 TEZAK SUPPLY COMPANY	25.99						
	12/16/25	SOLID WASTE Supplies	25.99			5410 430840	229		101000
		2512-256033							
136518		4252 TEZAK SUPPLY COMPANY	29.98						
	12/23/25	Road 1 - Supplies	29.98			2110 430201	229		101000
		2512-256392							
		Total for Vendor:	385.96						
136496		307 TOWN OF ENNIS	150.00						
	12/15/25	MVM - 211 N Main Sewer Basket	150.00*			5110 440320	357		101000
		2025055							
		Total for Vendor:	150.00						
136506		419 TOWN OF TWIN BRIDGES	1,642.71						
	12/22/25	Fair - Water/Sewer 111-00	1,478.67			2160 460240	342		101000
	12/22/25	FAIR - WATER/SEWER 369-00	164.04			2160 460240	342		101000
		Total for Vendor:	1,642.71						
136461		420 TRACTOR & EQUIPMENT CO.	1,312.72						
	12/02/25	SOLID WASTE - PARTS	64.02			5410 430840	362		101000
		BZCS3068718							
	12/10/25	SOLID WASTE - PARTS	1,248.70			5410 430840	362		101000
		BZCS3072935							
		Total for Vendor:	1,312.72						
136431		5362 US. FOODS	1,449.17						
	12/11/25	MVM - SUPPLIES	29.62			5110 440340	229		101000
		5891888							
	12/11/25	MVM - Food	1,269.81			5110 440340	223		101000
		5891888							
	12/11/25	MVM SUPPLIES	158.24			5110 440340	229		101000
		3044019							
	12/09/25	MVM Food	-4.25			5110 440340	223		101000
		5977945							
	12/09/25	MVM FOOD	-4.25			5110 440340	223		101000
		5977944							
		Total for Vendor:	1,449.17						

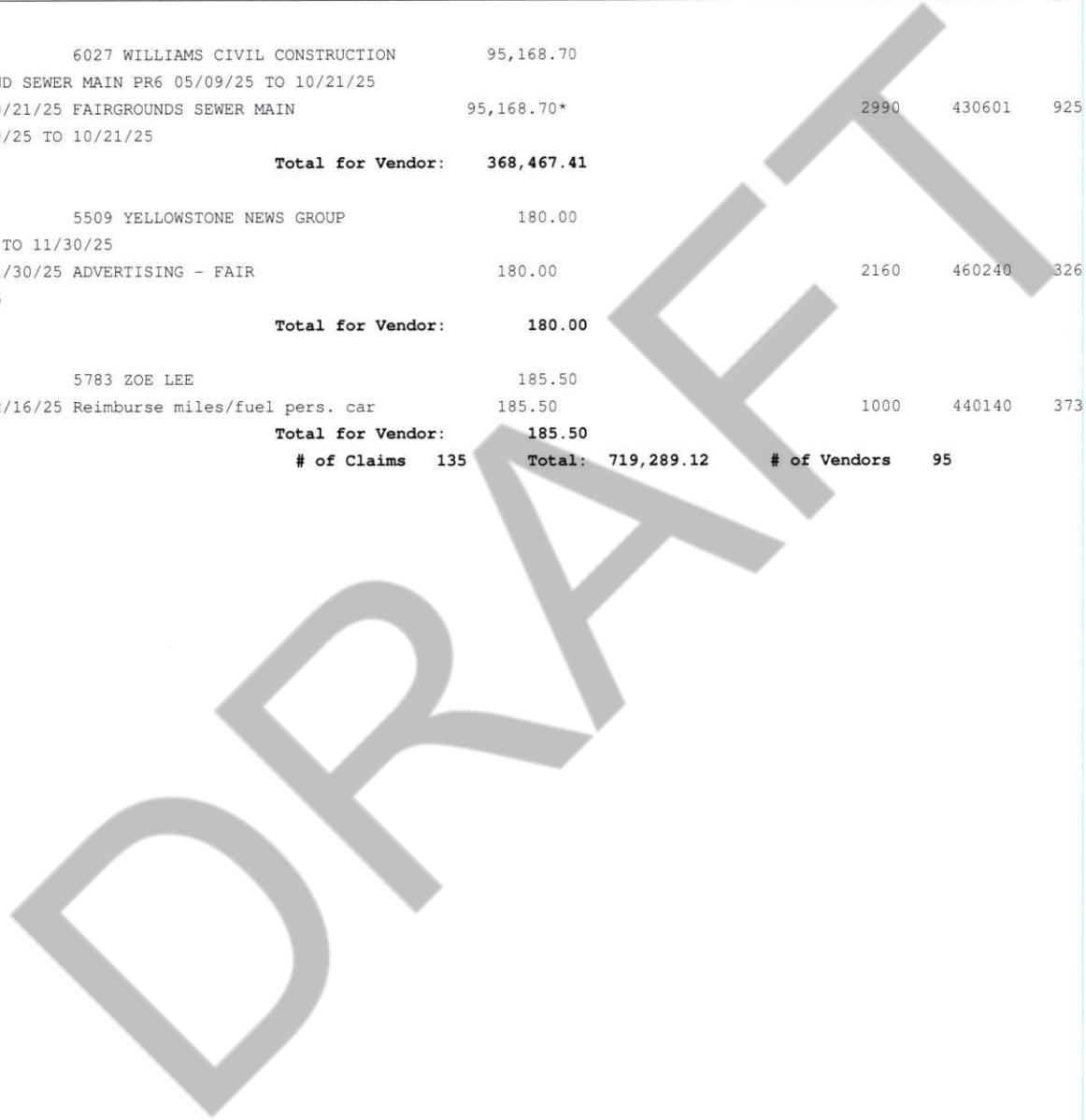
12/30/25
13:56:43

MADISON COUNTY
Claim Approval List
For the Accounting Period: 12/25

Page: 26 of 28
Report ID: AP100V

* ... Over spent expenditure

Claim/	Check	Vendor #/Name/ Invoice #/Inv Date/Description	Document \$/ Line \$	Disc \$	PO #	Fund Org Acct	Object	Proj	Cash Account
136437		6027 WILLIAMS CIVIL CONSTRUCTION FAIRGROUND SEWER MAIN PR6 05/09/25 TO 10/21/25 10/21/25 FAIRGROUNDS SEWER MAIN PR6 05/09/25 TO 10/21/25	95,168.70 95,168.70*			2990 430601	925		101000
Total for Vendor:			368,467.41						
136465		5509 YELLOWSTONE NEWS GROUP 11/01/25 TO 11/30/25 11/30/25 ADVERTISING - FAIR 112591545	180.00 180.00			2160 460240	326		101000
Total for Vendor:			180.00						
136501		5783 ZOE LEE 12/16/25 Reimburse miles/fuel pers. car	185.50 185.50			1000 440140	373		101000
Total for Vendor:			185.50						
# of Claims			135	Total:		719,289.12	# of Vendors	95	



12/30/25
13:56:43

MADISON COUNTY
Fund Summary for Claims
For the Accounting Period: 12/25

Page: 27 of 28
Report ID: AP110

Fund/Account	Amount
1000 General	
101000 Cash	33,773.35
2110 Road	
101000 Cash	4,118.27
2130 Bridge	
101000 Cash	22,750.18
2140 Weed	
101000 Cash	3,284.00
2160 County Fair Fund	
101000 Cash	5,297.21
2170 Airport	
101000 Cash	7,333.87
2220 Library	
101000 Cash	1,164.92
2300 Public Safety-Law Enforcement	
101000 Cash	35,884.15
2820 Gas Tax	
101000 Cash	-20.13
2850 911 Emergency	
101000 Cash	20,785.93
2973 Public Health	
101000 Cash	107.59
2990 American Rescue Plan Act (ARPA)	
101000 Cash	374,038.80
2992 Local Assistance & Tribal Consistency	
101000 Cash	3,705.00
5110 Madison Valley Manor	
101000 Cash	133,604.32
5111 Tobacco Root Mtn Care Center	
101000 Cash	42,842.08
5410 Solid Waste	
101000 Cash	13,733.45
7920 REFUND REVOLVING	
101000 Cash	16,886.13
Total:	719,289.12



01/02/26
08:50:45

MADISON COUNTY
Claim Approval List
For the Accounting Period: 12/25

Page: 1 of 11
Report ID: AP100V

* ... Over spent expenditure

Claim/	Check	Vendor #/Name/ Invoice #/Inv Date/Description	Document \$/ Line \$	Disc \$	PO #	Fund Org Acct	Object	Proj	Cash Account
136564		5139 AMAZON CAPITAL SERVICES	670.74						
	12/18/25	MVM- MED ANCILLARIES	143.61			5110 440330	232		101000
	1LDL-9GY1-JXML								
	12/19/25	MVM- MED ANCILLARIES	14.97			5110 440330	232		101000
	1N9V-XCYC-4NTG								
	12/20/25	MVM- MED ANCILLARIES	57.92			5110 440330	232		101000
	1JJG-67NX-VNWK								
	12/18/25	MVM- FOOD	17.96			5110 440340	223		101000
	1R1M-NXFK-FN6R								
	12/27/25	MVM- FOOD	70.27			5110 440340	223		101000
	1VWW-63XP-TQPY								
	12/22/25	MVM- FOOD	59.99			5110 440340	223		101000
	1QW9-TW99-CLGG								
	12/27/25	MVM- SUPPLIES	47.94			5110 440340	229		101000
	1CYY-RMLV-L7XM								
	12/29/25	MVM- SUPPLIES	62.18			5110 440340	229		101000
	1D3F-MCVW-JPMJ								
	12/29/25	MVM- FOOD	27.48			5110 440340	223		101000
	1GGN-7Q6W-JPC1								
	12/29/25	MVM- FOOD	57.71			5110 440340	223		101000
	19WK-MXHF-H9RN								
	12/29/25	MVM- SUPPLIES	14.99			5110 440340	229		101000
	19WK-MXHFH9RN								
	12/22/25	MVM- FOOD	20.28			5110 440340	223		101000
	1RWD-MVCL-G339								
	12/22/25	MVM- SUPPLIES	75.44			5110 440340	229		101000
	1RWD-MVCL-G339								
		Total for Vendor:	670.74						
136594		3550 AMERIGAS	922.37						
	12/19/25	OLD COURTHOUSE	922.37			1000 411230	349		101000
	757726593								
		Total for Vendor:	922.37						

01/02/26
08:50:45

MADISON COUNTY
Claim Approval List
For the Accounting Period: 12/25

Page: 2 of 11
Report ID: AP100V

* ... Over spent expenditure

Claim/	Check	Vendor #/Name/ Invoice #/Inv Date/Description	Document \$/ Line \$	Disc \$	PO #	Fund Org Acct	Object	Proj	Cash Account
136565		5623 BADLANDS MEDICAL STAFFING	4,017.60						
	12/29/25	MVM - Staffing	3,585.00			5110 440330	357		101000
3428									
	12/29/25	MVM - Staffing Mileage	432.60*			5110 440330	531		101000
3428									
		Total for Vendor:	4,017.60						
136278		3688 D&D TIRE SUPPLY	488.00						
	4606 11/19/25	tires	488.00			2110 430203	239		101000
		Total for Vendor:	488.00						
136349		169 ENNIS ACE HARDWARE	45.15						
	11/25/25	Maintenance motion light	45.15			1000 411230	366		101000
473578									
136566		169 ENNIS ACE HARDWARE	566.28						
	12/25/25	ACCOUNT #7271 DEC STATEMENT	566.28*			5110 440320	229		101000
ACCT#7271									
		Total for Vendor:	611.43						
136567		5063 FUSION MEDICAL STAFFING, LLC	1,821.00						
	12/20/25	MVM- STAFFING	1,821.00			5110 440330	357		101000
INV931864									
		Total for Vendor:	1,821.00						
136568		6223 HILLYARD	103.38						
	12/29/25	MVM- SUPPLIES	103.38*			5110 440320	229		101000
606040534									
		Total for Vendor:	103.38						
136569		2347 LEONA STREDWICK	70.00						
	12/30/25	Miles reimburse to TRMCC9	70.00			5110 440380	373		101000
		Total for Vendor:	70.00						

01/02/26
08:50:45

MADISON COUNTY
Claim Approval List
For the Accounting Period: 12/25

Page: 3 of 11
Report ID: AP100V

* ... Over spent expenditure

Claim/	Check	Vendor #/Name/ Invoice #/Inv Date/Description	Document \$/ Line \$	Disc \$	PO #	Fund Org Acct	Object	Proj	Cash Account
136593		84 MADISONIAN INC	130.00						
		12/11/25 COMMISS - ADVERTISING BID INVI	130.00*			1000 410100	330		101000
		2025CI-11336							
		Total for Vendor:	130.00						
136588		5817 MASTERCARD ACCT 0585	166.94						
		Planning Department							
		12/22/25 PLANNING - ACCT#0585	73.98			2250 470210	229		101000
		WALTERS ACE HARDWARE							
		12/22/25 PLANNING A- ACCT#0585	92.96			2250 470210	320		101000
		VISTA PRINT							
		Total for Vendor:	166.94						
136581		5129 MASTERCARD ACCT 1917	210.00						
		12/22/25 VICTIM ADVO - ACCT# 1917	100.00			2917 420180	229		101000
		12/22/25 VA - ACCT#1917	110.00			2917 420180	381		101000
		Total for Vendor:	210.00						
136586		5870 MASTERCARD ACCT 2395	756.63						
		12/22/25 Commish - ACCT#2395	455.00			1000 410100	357		101000
		SURE FIRE LLC							
		12/22/25 COMMISH - ACCT#2395	289.12			1000 410100	373		101000
		DELTA HOTELS							
		12/22/25 COMMISH - ACCT#2395	12.51*			1000 410100	631		101000
		FINANCE CHRG							
		Total for Vendor:	756.63						
136584		5083 MASTERCARD ACCT 2604	34.18						
		12/22/25 RURAL HEALTH - ACCT#2604	21.00			1000 410131	357		101000
		12/22/25 RURAL HEALTH ACCT#2604	13.18*			1000 410131	631		101000
		FINANCE CHRG							
		Total for Vendor:	34.18						

01/02/26
08:50:45

MADISON COUNTY
Claim Approval List
For the Accounting Period: 12/25

Page: 4 of 11
Report ID: AP100V

* ... Over spent expenditure

Claim/	Check	Vendor #/Name/ Invoice #/Inv Date/Description	Document \$/ Line \$	Disc \$	PO #	Fund Org Acct	Object	Proj	Cash Account
136583		5706 MASTERCARD ACCT 4979	3.27						
		12/22/25 CNTY ATTY - ACCT #4979	3.27*			1000 411100	631		101000
		FINANCE CHRG							
		Total for Vendor:	3.27						
136580		5502 MASTERCARD ACCT 5050	398.06						
		12/22/25 PLANNER ACCT#5050	32.49			1000 411840	229		101000
		12/22/25 ESPON SCANNER ACCT #5050	359.99			1000 410550	212		101000
		12/22/25 FINANCE CHRG	5.58*			1000 411840	631		101000
		Total for Vendor:	398.06						
136582		5590 MASTERCARD ACCT 5350	541.16						
		12/22/25 CNTY ATTY - ACCT#5350	74.95			1000 411100	214		101000
		VISTA PRINT							
		12/22/25 CNTY ATTY - ACCT #5350	51.98			1000 411100	214		101000
		AMAZON							
		12/22/25 CNTY ATTY - ACCT #5350	12.99			1000 411100	214		101000
		AMAZON							
		12/22/25 CNTY ATTY - ACCT #5350	21.95*			1000 411100	311		101000
		USPS							
		12/22/25 CNTY ATTY - ACCT #5350	197.50			1000 411100	214		101000
		AMAZON							
		12/22/25 CNTY ATTY - ACCT #5350	150.00			1000 411100	357		101000
		SQ CA PROCESS SERV							
		12/22/25 CNTY ATTY - ACCT #5350	19.99			1000 411100	330		101000
		ADOBE							
		12/22/25 CNTY ATTY ACCT#5350	11.80*			1000 411100	631		101000
		FINANCE CHARGE							
		Total for Vendor:	541.16						
136561		4751 MASTERCARD ACCT 7408	181.18						
		11/23/25 MVM - ACCT#7408	68.43			5110 440370	330		101000
		12/02/25 MVM- ACCT#7408	8.99			5110 440370	330		101000
		12/08/25 MVM- ACCT#7408	19.99			5110 440370	330		101000
		12/10/25 MVM - ACCT#7408	14.99			5110 440370	330		101000
		12/16/25 MVM- ACCT#7408	24.99			5110 440370	330		101000

01/02/26
08:50:45

MADISON COUNTY
Claim Approval List
For the Accounting Period: 12/25

Page: 5 of 11
Report ID: AP100V

* ... Over spent expenditure

Claim/	Check	Vendor #/Name/ Invoice #/Inv Date/Description	Document \$/ Line \$	Disc \$	PO #	Fund Org Acct	Object	Proj	Cash Account
	12/15/25	MVM- ACCT#7408	19.99			5110 440370	330		101000
	12/22/25	MVM- ACCT#7408	23.80*			5110 440370	631		101000
		Total for Vendor:	181.18						
136578		4503 MASTERCARD ACCT 9043	414.31						
	12/22/25	CLEANING STUFF - ACCT #9043	42.09			1000 411233	224		101000
	12/22/25	AMAZON - ACCT #9043	363.30			1000 411233	224		101000
	12/22/25	FINANCE CHARGES - ACCT #9043	8.92*			1000 411233	631		101000
		Total for Vendor:	414.31						
136590		4788 MASTERCARD ACCT 9254	4.04						
	12/22/25	EXTENSION K- ACCT#9254	4.04*			1000 450400	631		101000
		FINANCE CHRG							
		Total for Vendor:	4.04						
136589		5525 MASTERCARD ACCT 9341	213.91						
	12/22/25	EXTENSION - ACCT#9341	6.44			2290 450400	200		101000
		WALMART							
	12/22/25	EXTENSION - ACCT#9341	26.50			1000 450400	330		101000
		MAILCHIMP							
	12/22/25	EXTENSION - ACCT#9341	52.87			1000 450400	200		101000
		AMAZON							
	12/22/25	EXTENSION - ACCT#9341	4.59			1000 450400	200		101000
		ACE - WHITEHALL							
	12/22/25	EXTENSION - ACCT#9341	74.69			1000 450400	200		101000
		AMAZON							
	12/22/25	EXTENSION - ACCT#9341	11.61			1000 450400	200		101000
		WALMART							
	12/22/25	EXTENSION - ACCT#9341	4.97			1000 450400	361		101000
		WALMART							
	12/22/25	EXTENSION - ACCT#9341	32.24*			1000 450400	631		101000
		FINANCE CHRG							
		Total for Vendor:	213.91						

01/02/26
08:50:45

MADISON COUNTY
Claim Approval List
For the Accounting Period: 12/25

Page: 6 of 11
Report ID: AP100V

* ... Over_spent expenditure

Claim/	Check	Vendor #/Name/ Invoice #/Inv Date/Description	Document \$/ Line \$	Disc \$	PO #	Fund Org Acct	Object	Proj	Cash Account
136587		5534 MASTERCARD ACCT 9374	262.88						
	12/22/25	HR - ACCT#9374	46.98			2160 460240	229		101000
	FAIR - DOOR LOCK								
	12/22/25	HR - ACCT#9374	139.99			2160 460240	224		101000
	FAIR - VACUUM								
	12/22/25	HR - ACCT#9374	17.97			2160 460240	229		101000
	FAIR-SOCKET SET								
	12/22/25	HR - ACCT#9374	26.95			2160 460240	211		101000
	FAIR- ENVELOPES								
	12/22/25	HR - ACCT#9374	5.38			2160 460240	211		101000
	FAIR- RETURN LABELS								
	12/22/25	HR - ACCT#9374	25.61*			1000 410800	631		101000
	FINANCE CHR								
		Total for Vendor:	262.88						
136570		6243 MEDICAL SOLUTIONS, LLC	2,625.95						
	12/23/25	MVM- STAFFING	2,625.95			5110 440330	357		101000
	201142702								
		Total for Vendor:	2,625.95						
136571		94 MEDLINE INDUSTRIES LP	1,036.16						
	12/24/25	MVM- MED SUPPLIES	596.47			5110 440330	232		101000
	2404215588								
	12/24/25	MVM- BRIEFS	373.94			5110 440330	232		101000
	2404215587								
	12/24/25	MVM - DRESSING	65.75			5110 440330	232		101000
	2404215589								
		Total for Vendor:	1,036.16						
136572		2698 MENDENHALL EQUIPMENT CO.	107.14						
	12/11/25	MVM- REPAIRS	107.14*			5110 440320	229		101000
	I153178								
		Total for Vendor:	107.14						

01/02/26
08:50:45

MADISON COUNTY
Claim Approval List
For the Accounting Period: 12/25

Page: 7 of 11
Report ID: AP100V

* ... Over spent expenditure

Claim/	Check	Vendor #/Name/ Invoice #/Inv Date/Description	Document \$/ Line \$	Disc \$	PO #	Fund Org Acct	Object	Proj	Cash Account
136573		3289 MONIDA HEALTHCARE STAFFING	4,874.97						
	12/29/25	MVM - STAFFING	4,207.47			5110 440330	357		101000
10238									
	12/29/25	MVM - STAFFING MILEAGE	667.50*			5110 440330	531		101000
10238									
		Total for Vendor:	4,874.97						
136579		876 MONTANA DEPARTMENT OF	2,500.00						
	12/31/25	Madison Cty Filing fee	2,500.00			1000 410700	330		101000
		Total for Vendor:	2,500.00						
136574		5099 MOUNTAIN MEDICAL STAFFING	20,950.49						
	12/30/25	MVM- STAFFING	9,020.80			5110 440330	357		101000
0004076									
	12/30/25	MVM- STAFFING MILEAGE	970.92*			5110 440330	531		101000
0004076									
	12/25/25	MVM- STAFFING	10,022.65			5110 440330	357		101000
0004069									
	12/25/25	MVM- STAFFING MILEAGE	936.12*			5110 440330	531		101000
0004069									
		Total for Vendor:	20,950.49						
136275		2444 NASCO	272.15						
	1000971	Tobacco Root Mtn Care Ct	226.20			5111 440370	229		101000
	1000981	Tobacco Root Mtn Care Ct	45.95			5111 440370	229		101000
		Total for Vendor:	272.15						
136577		5448 PEOPLE 2.0 GLOBAL	8,296.50						
	12/26/25	MVM- STAFFING	7,735.50			5110 440330	357		101000
594003996									
	12/26/25	MVM- MILEAGE	561.00*			5110 440330	531		101000
594003996									
		Total for Vendor:	8,296.50						

01/02/26
08:50:45

MADISON COUNTY
Claim Approval List
For the Accounting Period: 12/25

Page: 8 of 11
Report ID: AP100V

* ... Over spent expenditure

Claim/	Check	Vendor #/Name/ Invoice #/Inv Date/Description	Document \$/ Line \$	Disc \$	PO #	Fund Org Acct	Object	Proj	Cash Account
136575		295 QUILL LLC	69.99						
		12/29/25 MEMBERSHIP	69.99			5110 440310	330		101000
47055893									
		Total for Vendor:	69.99						
136591		2300 RUBY VALLEY AVIATION	12,000.00						
		12/30/25 TB AIRPORT - MANAGER FEES	12,000.00			2170 430321	357		101000
251000									
		Total for Vendor:	12,000.00						
136345		5065 T-MOBILE	1,008.74						
		12/10/25 DES	103.60			1000 420600	345		101000
		12/10/25 Roads	180.66			2110 430200	345		101000
		12/10/25 PH	90.33			2973 440100	345		101000
		12/10/25 Weed	30.11			2140 431100	345		101000
		12/10/25 Victim Advocate	30.11			2917 420180	345		101000
		12/10/25 Airport	57.31			2170 430320	345		101000
		12/10/25 HR	30.11			1000 410800	345		101000
		12/10/25 Senior Bus	60.22			2280 450310	357		101000
		12/10/25 Safety	30.11			1000 410131	345		101000
		12/10/25 Sanitarian	73.49			1000 440140	345		101000
		12/10/25 Fair	30.11			2160 460240	345		101000
		12/10/25 IT	90.33			1000 411235	345		101000
		12/10/25 GIS	30.11			1000 411236	345		101000
		12/10/25 Maintenance	30.11			1000 411230	345		101000
		12/10/25 Planning	30.11			2250 470210	330		101000
		12/10/25 Custodial	30.11			1000 411233	345		101000
		12/10/25 Extension	30.11			1000 450400	345		101000
		12/10/25 Commissioners	30.01			1000 410100	345		101000
		12/10/25 Misc Mobile Internet	21.69			1000 411235	345		101000
		Total for Vendor:	1,008.74						
136576		5362 US. FOODS	1,615.87						
		12/24/25 MVM- FOOD	1,571.73			5110 440340	223		101000
3384912									
		12/24/25 MVM- SUPPLIES	44.14			5110 440340	229		101000
3384912									
		Total for Vendor:	1,615.87						

01/02/26
08:50:45

MADISON COUNTY
Fund Summary for Claims
For the Accounting Period: 12/25

Page: 10 of 11
Report ID: AP110

Fund/Account	Amount
1000 General	
101000 Cash	6,482.03
2110 Road	
101000 Cash	668.66
2140 Weed	
101000 Cash	30.11
2160 County Fair Fund	
101000 Cash	267.38
2170 Airport	
101000 Cash	12,057.31
2250 Planning	
101000 Cash	197.05
2280 Senior Citizens	
101000 Cash	60.22
2290 Extension Service	
101000 Cash	6.44
2917 Victims Advocate	
101000 Cash	240.11
2973 Public Health	
101000 Cash	90.33
5110 Madison Valley Manor	
101000 Cash	47,007.25
5111 Tobacco Root Mtn Care Center	
101000 Cash	272.15
Total:	67,379.04

DRAFT

RESOLUTION 1-2026
A Resolution Setting Mileage Rates for Calendar Year 2026

WHEREAS, the Board of Commissioners must establish a Mileage Reimbursement Rate for public officers or employees required to travel for County business, and

WHEREAS, the standard mileage rate for business is based on an annual study of the fixed and variable costs of operating an automobile, including depreciation, insurance, repairs, tires, maintenance, gas and oil, and

WHEREAS, Montana Association of Counties has provided Madison County with the standard reimbursement rate for mileage as set by the Internal Revenue Service.

WHEREAS, The Madison County Board of Commissioners did approve the mileage rate for travel for the county to be 72.5 cents per mile as of January 1, 2026, as reported by the Internal Revenue Service and;

WHEREAS, Employees who desire to use their personal vehicle for travel rather than a county vehicle shall be reimbursed at 48.15% of the rate established by the I.R.S. The current I.R.S. travel rate is 72.5 cents, therefore the current county rate for personal vehicles is set at 35 cents per miles. If county vehicles are unavailable at the employee's work location for required travel, mileage for personal vehicles will be reimbursed at the current full I.R.S. rate.

NOW THEREFORE BE IT RESOLVED that effective January 1, 2026, per MCA 2-18-503, the Madison County Mileage Reimbursement Rate is 72.5 cents per mile for the first 1,000 miles traveled in a calendar month and three cents less or 69.5 cents per mile actually traveled thereafter. If a business vehicle is available but the public officer or employee chooses to use a personal vehicle, the public officer or employee may be reimbursed at the rate of 48.15% of the mileage rate allowed by the Internal Revenue Service for the current year. (35 cents per mile up to 1000 miles and 33.5 cents per mile after 1000 miles).

APPROVED BY THE BOARD OF COMMISSIONERS THIS 6th DAY OF JANUARY, 2026.

WILLIAM A TODD, CHAIRMAN

RONALD E. NYE

DUKE W. GILMAN

ATTEST:

Paula McKenzie
Clerk and Recorder

RESOLUTION 2-2026
A RESOLUTION SETTING DATES
FOR COMMISSION MEETINGS

WHEREAS, Section **7-5-2122 MCA** establishes requirements when meetings of Board of Commissioners must establish by resolution a regular meeting date and notify the public of that date; and

WHEREAS, Except as provided in subsection (3) or in the event of an emergency situation under **2-3-112** affecting the public health, welfare, or safety, all meeting must be held on the date designated in subsection (1) and at the county seat of the board's county; and

WHEREAS, The board may, by resolution and having provided at least 2 days posted public notice in accordance with **7-1-2123**, designate another meeting time or place; and

WHEREAS, The presence of a quorum of members of the board at an event or meeting of another entity or organization or traveling in the same vehicle does not constitute a meeting of the boards as long as no issues over which the commission has supervision, control, jurisdiction, or advisory power are discussed or heard. County business may be conducted during a meeting as defined in **2-3-202** for which notice has been properly given; and

WHEREAS, If a quorum of commissioners is present at an event or meeting or is traveling in the same vehicle when it was not possible to provide public notice under **7-1-2123** and issues over which the commission has supervision, control jurisdiction, or advisory power are discussed or heard, the commissioners present shall provide a report at the commission's next regularly scheduled meeting. The report must include the name of the event or meeting, the name of the persons involved, the date and location of the event or meeting, and a brief summary of the issues discussed or heard. If the commissioners' presence at the unnoticed meeting or event is reasonably expected to precipitate ensuing consideration of any issue by the board of county commissioners, details associated with the issue discussed or heard must also be included in the report.

NOW THEREFORE, BE IT RESOLVED that Madison County Board of Commissioners will conduct weekly meetings on Tuesdays of each week beginning at 10:00 a.m. in the First Floor Public Meeting Room of the Madison County Administrative Office Building in Virginia City, Montana, except on legal holidays or if otherwise noticed in the Public Notice Posting locations.

BE IT FURTHER RESOLVED that Madison County Board of Commissioners will conduct weekly work sessions on Mondays of each week beginning at 10:00 a.m. in the First Floor Public Meeting Room of the Madison County Administrative Office Building in Virginia City, Montana, except on legal holidays or if otherwise noticed in the Public Notice Posting locations. These work sessions will be open to the public, but the Board will not make any decisions at the sessions.

APPROVED BY THE BOARD OF COMMISSIONERS THIS 6th DAY OF JANUARY, 2026.

 WILLIAM A. TODD, CHAIRMAN

 RONALD E. NYE

 DUKE W. GILMAN

ATTEST:

 Paula McKenzie
 Clerk and Recorder

RESOLUTION 3-2026
A RESOLUTION SETTING COUNTY OFFICE HOURS

WHEREAS, per MCA 7-4-102, the Board of Commissioners must establish the business hours of County offices, and

WHEREAS, unless otherwise provided by law, each officer shall keep the officer's office open for the transaction of business during the office hours determined by the governing body by resolution after a public hearing and only if consented to by any affected elected county officer Monday through Friday except legal holidays, and

WHEREAS, the County Treasurer may, in the interest of the safekeeping of funds, securities, and records under their control, close their offices during the period from noon to 1:00 p.m. every day.

NOW THEREFORE, BE IT RESOLVED by the Madison County Board of Commissioners that all elected County officials, with the exception of the Board of Commissioners, will keep their offices open for business from 8:00 a.m. until 5:00 p.m. Monday through Friday except legal holidays.

BE IT FURTHER RESOLVED that all other offices under the jurisdiction of the Board of Commissioners will be open for business from 8:00 a.m. until 5:00 p.m. Monday through Friday except legal holidays unless permission to vary from these hours has been granted by the Board of Commissioners and the closure has been legally noticed, with the exception of certain offices that are closed during the lunch hour (12:00 p.m. to 1:00 p.m.).

APPROVED BY THE BOARD OF COMMISSIONERS THIS 6th DAY OF JANUARY, 2026.

WILLIAM A. TODD, CHAIRMAN

RONALD E. NYE

DUKE W. GILMAN

ATTEST:

Paula McKenzie
Clerk and Recorder

RESOLUTION 4-2026
A Resolution Establishing Locations
for Posting Public Notice

WHEREAS, Section 7-1-2121 MCA establishes requirements when public notice is to be provided by publication; and

WHEREAS, Section 7-1-2122 MCA establishes requirements when public notice is to be provided by mail; and

WHEREAS, House Bill 334 (2013) establishes requirements when public notice is to be provided by posting and is codified as 7-1-2123 MCA.

7-1-2123 Posting. (1) *The governing body shall specify by resolution a public location for posting information and shall order erected a suitable posting board.*
(2) *When posting is required, a copy of the document must be placed on the posting board, and a copy must be available at the office of the county clerk and recorder.*

NOW THEREFORE BE IT RESOLVED, that Madison County hereby designates the following location(s) as the location where public notice will be provided when public notice is to be done by posting:

1. The bulletin board located at the front entrance of the Administrative Office Building, 103 West Wallace, Virginia City, Montana.
2. The bulletin board located in the Virginia City Post Office.
3. The Madison County website.

APPROVED BY THE BOARD OF COMMISSIONERS THIS 6th DAY OF JANUARY, 2026.

WILLIAM A. TODD, CHAIRMAN

RONALD E. NYE

DUKE W. GILMAN

ATTEST:

Paula McKenzie
Clerk and Recorder

Resolution Number: 5-2026

A RESOLUTION ESTABLISHING AGENDA ITEMS SUBMISSION TIME FRAME

WHEREAS, it is essential to ensure proper preparation and communication for scheduled meetings, and

WHEREAS, last-minute changes to agendas may disrupt participants' ability to adequately prepare and engage in meaningful discussions,

BE IT RESOLVED, that any modifications or changes to the meeting agenda shall not be made after Wednesday 12:00 PM and all documentation must be provided to the Commissioners' Office by Thursday at 5:00 PM.

FURTHERMORE, any proposed changes to the agenda after the specified day and time must be submitted in writing to the Board of Commissioners for review and approval. Only changes deemed urgent or critical to the meeting's objectives will be considered after the cutoff time.

THIS Resolution shall take effect immediately and apply to all future meetings, unless otherwise amended by a subsequent resolution.

PASSED and ADOPTED by the Madison County Board of Commissioners this 6th day of January, 2026.

WILLIAM A. TODD, CHAIRMAN

RONALD E. NYE

DUKE W. GILMAN

ATTEST:

Paula McKenzie
Clerk and Recorder

December 27, 2025

Foundation for Montana History
1750 North Washington Street
Helena, Montana 59601

Dear Foundation for Montana History Grant Review Committee:

On behalf of Madison County Commissioners Office, I am writing in strong support of the Virginia City Schoolhouse Foundation's application for a Foundation for Montana History (FMH) grant to restore the windows of the historic Virginia City Schoolhouse. As the owner of the schoolhouse property for over 30 years, we also give permission for the proposed improvements.

During this period, the property has housed various county and municipal government offices. In 2009, the property was vacated, due to lingering structural safety concerns associated with damage sustained by 1959 Hebgen Lake earthquake and limited financial resources to properly renovate the building. For the past 15 years, the county has attempted to find a new use or appropriate new owner for the property.

Accordingly, we were grateful when earlier this year, the Virginia City Schoolhouse Foundation (VCSF), a local non-profit organization, approached the county to inquire about leasing the building and leading the renovation effort. Subsequently, the VCSF entered into a 2-year lease with Madison County and has expressed the desire to acquire the property as a long-term community asset dedicated to preserving the schoolhouse, sharing its story, and supporting the arts in Madison County and Virginia City's well-established heritage tourism economy.

The VCSF has developed a 3-phased strategy, estimated to cost \$1.0 million, to renovate the building. Indicative of strong regional support, over \$125,000 of cash and in-kind contributions have been raised for the project. As part of Phase 2 Exterior Repairs, the requested \$15,000 FMH grant, matched with \$26,000 of secured funds, will be used to restore the building's 18 original wood windows. These windows are currently in poor condition.

We encourage your support for this worthy endeavor.

Sincerely,

MADISON COUNTY BOARD OF COMMISSIONERS

P.O. BOX 278

VIRGINIA CITY, MT 59755

Commissioners

Duke W. Gilman
Ronald E. Nye
William A. Todd

e-mail: madco@madisoncountymt.gov
www.madisoncountymt.gov

Phone: (406) 843-4277
Fax: (406) 843-5517

.....
January 6, 2025

Foundation for Montana History
1750 North Washington Street
Helena, Montana 59601

Dear Foundation for Montana History Grant Review Committee:

On behalf of the Madison County Commissioners' Office, we hereby convey our unequivocal support for the Virginia City Schoolhouse Foundation's application for a Foundation for Montana History (FMH) grant, intended to facilitate the restoration of the historic Virginia City Schoolhouse's windows. As the longstanding proprietor of the schoolhouse property for over three decades, we also endorse the proposed enhancements.

During this period, the property has accommodated various county and municipal government offices. In 2009, the property was vacated due to ongoing structural safety concerns arising from damage sustained during the 1959 Hebgen Lake earthquake and limited financial resources allocated for proper renovation. Over the past 15 years, the county has endeavored to find a new function or a suitable new owner for the property.

Accordingly, we expressed our gratitude earlier this year when the Virginia City Schoolhouse Foundation (VCSF), a local nonprofit organization, initiated contact with the county to inquire about leasing the building and managing its renovation. Subsequently, the VCSF entered into a two-year lease agreement with Madison County and has articulated its interest in acquiring the property as a long-term community asset dedicated to the preservation of the schoolhouse, sharing its historical significance, and fostering the arts within Madison County and Virginia City's well-established heritage tourism economy.

The VCSF has devised a three-phase strategy, estimated to necessitate a funding of \$1.0 million, for the renovation of the building. The initiative has received considerable regional support, amounting to over \$125,000 in both monetary and in-kind contributions. As part of Phase 2, Exterior Repairs, the requested \$15,000 FMH grant, supplemented by \$26,000 in secured funds, will enable the restoration of the building's eighteen original wooden windows, which are currently in a state of deterioration.

We respectfully seek your support for this commendable endeavor.

Duke W. Gilman,
District 1 Commissioner

Ronald E. Nye
District 2 Commissioner

William A. Todd, Chairman
District 3 Commissioner



December 19, 2025

MADISON COUNTY JV PROGRAM
PO BOX 278
VIRGINIA CITY MT 59755

Subject: **FY2026 COUNTY MOTOR VEHICLE GRAVEYARD GRANT for
MADISON COUNTY JV GRAVEYARD ALDER (JVCG-0030)**

To Kacey:

Thank you for submitting your Fiscal Year (FY) 2026 grant package with the itemized accounting form for FY 2025. I have reviewed the budget and the itemized accounting breakdown and approved them as submitted. Enclosed is one vendor invoice totaling \$32,548.60. This payment equals the full eligible grant of \$32,548.60 for FY2026. Please have the commissioners sign the vendor invoice and return it. As soon as the invoice is received the funding will be processed.

During FY2025, according to your motor vehicle graveyard log sheets your program hauled **14 vehicles**.

If you have any questions or need further assistance, please feel free to contact me at (406)444-3493 or email me at astaley@mt.gov.

Sincerely,

A handwritten signature in blue ink that reads "Andrea Staley". The signature is written in a cursive style.

ANDREA STALEY
Motor Vehicle Recycling & Disposal Program
Phone (406)444-3493
FAX (406)444-1374
Email astaley@mt.gov

Enclosure: FY2026 Vendor Invoice

RECEIVED
DEC 22 2025

STATE OF MONTANA VENDOR INVOICE	
VENDOR'S NAME ADDRESS	BILLED TO
PO BOX 278 VIRGINIA CITY MT 59755-0278 BOARD OF CO COMMISSIONERS - MADISON	DEPARTMENT OF ENVIRONMENTAL QUALITY MOTOR VEHICLE RECYCLING & DISPOSAL PO BOX 200901 1520 E 6TH AVE HELENA MT 59620-0901

QUANTITY	DESCRIPTION OF GOODS DELIVERED OR SERVICES RENDERED	AMOUNT
	<p>DATE: December 19, 2025</p> <p>Budget for the implementation of the motor vehicle recycling and disposal program for your county for Fiscal Year (FY) 2026, which has been approved and will be paid by the State of Montana Department of Environmental Quality, Waste Management and Remediation Division, Motor Vehicle Recycling & Disposal Program.</p> <p>Pursuant to Section 5-13-304(8), MCA. I recognize that Legislative Auditor is authorized to:</p> <p>"...audit records of organizations and individuals receiving grants from or on behalf of the state to determine that the grants are administered in accordance with the grant terms and conditions. Whenever a state agency enters into an agreement to grant resources under its control to others, the agency must obtain the written consent of the grantee to the audit provided for this subsection."</p> <p>Upon signing this vendor invoice and the receipt of funds, your program agrees that consent is hereby given to the Legislative Auditor to conduct the audit described in Section 5-13-304(8), MCA.</p> <p>ORG: #495722 OBJECT CODE: #66101</p>	
	<p>FY2026 Eligible Budget</p>	\$32,548.60
	<p>Less FY2025 Ending Balance</p>	\$0.00
	GRAND TOTAL =	\$32,548.60

STATE USE ONLY		I certify that this invoice is correct in all respects and that payment has not been received.	
APPROVED FOR PAYMENT			
		VENDOR'S NAME	
		DATE PROCESSED	
AUTHORIZED SIGNATURE		VENDOR'S SIGNATURE	
DATE		TITLE	

MADISON COUNTY, MONTANA
CLERK AND RECORDER



CERTIFICATON OF OWNERS

I, Paula Mckenzie, Clerk and Recorder of Madison County, Montana hereby certify that the names of those so marked on the attached Road Petition are the names of property owners; being ten in road district ___ OR all property owners adjacent to the street, road or alley which

Jacqueline A Todd and Jason Todd, trustee of the Jacqueline A Todd Irrevocable Trust (see petition)

Name of property owner bringing petition

requested to be closed by the Madison County Board of Commissioners.

Dated this 30th day of September, 2025


Clerk and Recorder of Madison County

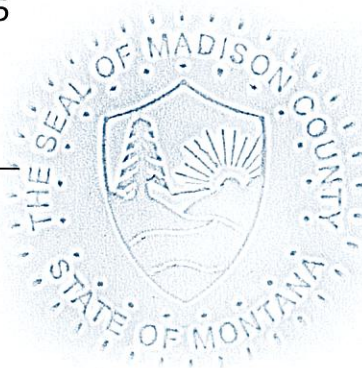


EXHIBIT "A"

MADISON COUNTY, MONTANA BOARD OF COMMISSIONERS



REQUEST TO CLOSE OR ABANDON STREET / ROAD / ALLEY

I/we request that the street / alley / road described below be closed or abandoned.
(Complete one of the following:)

Name of street in an unincorporated townsite: Alley in
Pony, MT (name of town), Lots 7, 8, 9, 10, 11 & 12 in Block (if
applicable) 44 of the _____ Addition.
Book _____ of _____ Page _____.

The alley that is contained in BLOCK 44 of _____ Addition to the
unincorporated townsite of Pony.

The road known as an Alley and located in
Block 44 lying between lots 7/8/9 and 10/11/12.
"Please see attached figure provided by Madison County"

(Please describe as thoroughly as possible, using township, range, section and any references possible)

Reason for request for closure / abandonment: We have owned the property for approximately
50 years, and in that time, the alley has never been used for any type of access.
Functionally, it is part of the lawn and gets mowed as part of upkeep.

I, we, understand that we will be required to circulate a petition (attached) requiring the signature/approval of
all adjacent property owners if street or alley is in an unincorporated town,
Or 10 (TEN) property owners of a majority of the freeholders in the road district.
Additionally, I/we have provided a map of the area being requested for closure/abandonment (attached). (This
map is easily discernable and is in a black and white format)

Signed, this 30 day of September, 2025.

Jacqueline A. Todd
Jason Todd (Trustee)

Petition for Road, Street or Alley Closure

We the undersigned, being all affected property owners in the street or alley of an unincorporated town OR ten (10) (or a majority of the freeholders) of the road district taxable therein for the purposes within the County of Madison, do petition the Madison County Commissioners to close, after proper public hearing, a certain county road, street or alley, described as follows:

An alley within Block 44 in the town of Pony, MT lying between lots 7/8/9 and 10/11/12.

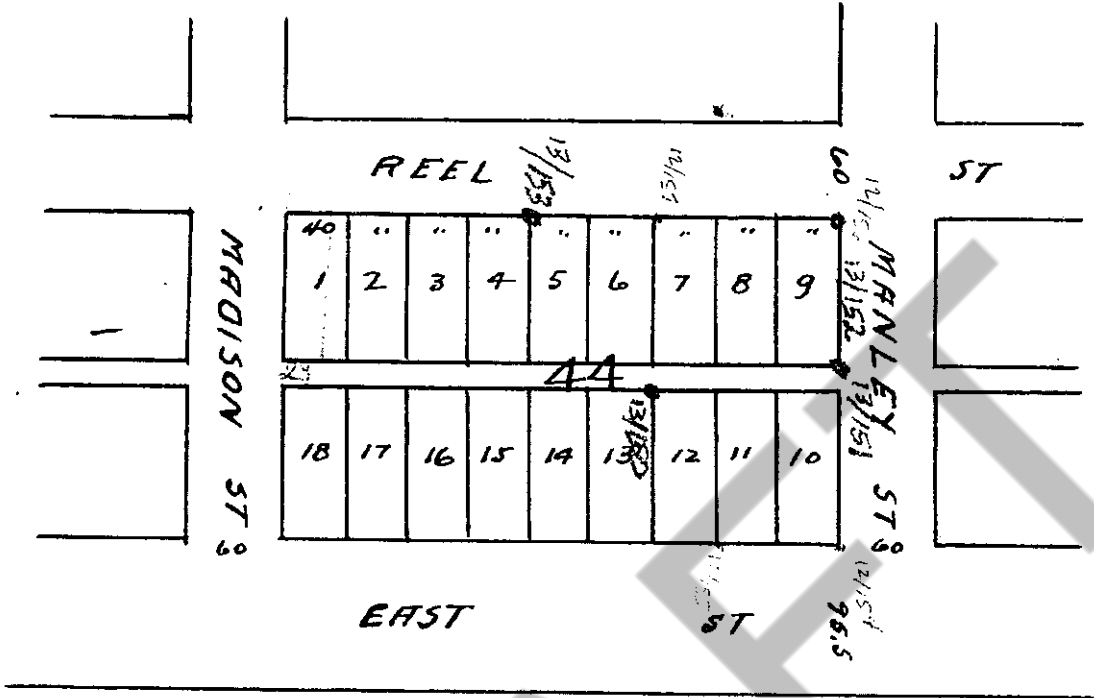
Please see figure attached at the end of this document for an illustration.

This petition is based upon the following facts:

This alley has not been functionally used for any purpose in over 50 years. It has become part of yard / lawn.

NAME	ADDRESS	SIGNATURE
1. Jacqueline A. Todd	4920 Foothill Rd., Butte, MT 59701	<i>Jacqueline A. Todd</i>
2. Jason Todd (Trustee)	1333 W 2425 S, Syracuse, UT 84075	<i>Jason Todd</i>
3.		
4.	<i>all property owned by Jacqueline A Todd irrevocable Trust w/ Jason Todd as trustee</i>	
5.		
6.		
7.		
8.		
9.		
10.		
11.		
12.		
13.		
14.		
15.		

(USE ADDITIONAL PAGES AS NECESSARY)



DRAFT

PUBLIC HEARING NOTICE

The Madison County Board of Commissioners will conduct a public hearing on Tuesday, On January 27, 2026, at 10:00 a.m., in the First Floor Public Meeting Room of the Administrative Office Building in Virginia City, Montana, a public meeting will be held to receive comments on a petition requesting the closure of a section of alley located in Section 18, T02S, R02W in Block 44, extending between Lots 7, 8, 9, 10, 11, and 12 of the Original Townsite of Pony, Montana. Copies of the petition are available for public review and comment at the Madison County Commissioners' Office.

Comments on the proposal are welcome. Written public comments may be submitted or delivered to the Madison County Commissioners' Office, P.O. Box 278, Virginia City, MT 59755; or emailed to madco@madisoncountymt.gov. Written comments must be received by 5:00 p.m. on January 26, 2026.

Please Publish: 1/8/2026 and 1/15/2026

MADISON COUNTY, MONTANA
CLERK AND RECORDER



CERTIFICATON OF OWNERS

I, Paula Mckenzie, Clerk and Recorder of Madison County, Montana hereby certify that the names of those so marked on the attached Road Petition are the names of property owners; all property owners adjacent to the street, road or alley which Randy & Debra Jacobson and Montana Climate Control

Name of property owner bringing petition

requested to be closed by the Madison County Board of Commissioners.

Dated this 6th day of November, 2025


Clerk and Recorder of Madison County



EXHIBIT "A"

MADISON COUNTY, MONTANA
BOARD OF COMMISSIONERS



REQUEST TO CLOSE OR ABANDON STREET / ROAD / ALLEY

I/we request that the street / alley / road described below be closed or abandoned.
(Complete one of the following:)

Name of street in an unincorporated townsite: _____ in _____
(name of town), Lots _____ in Block (if
applicable) _____ of the _____ Addition.
Book _____ of _____ Page _____.

The alley that is contained in BLOCK 9 of Bridges Addition to the
unincorporated townsite of Harrison, MT.

The road known as Alley Easement and located in
Bridges Addition, 536, T01S, R02W, Block 9
between lots 13-15 and 46-48

(Please describe as thoroughly as possible, using township, range, section and any references possible)

Reason for request for closure / abandonment: Overgrown & Swampy
Not Suitable for a road

I, we, understand that we will be required to circulate a petition (attached) requiring the signature/approval of
all adjacent property owners if street or alley is in an unincorporated town,
Or 10 (TEN) property owners of a majority of the freeholders in the road district.
Additionally, I/we have provided a map of the area being requested for closure/abandonment (attached). (This
map is easily discernable and is in a black and white format)

Signed, this 5 day of November, 2025

RJM

Randy Jacobson

Debra K. Jacobson

*See Attached
Cadastral
Map 5*

Petition for Road, Street or Alley Closure

We the undersigned, being all affected property owners in the street or alley of an unincorporated town OR ten (10) (or a majority of the freeholders) of the road district taxable therein for the purposes within the County of Madison, do petition the Madison County Commissioners to close, after proper public hearing, a certain county road, street or alley, described as follows:

See Attached Cadastral Maps

This petition is based upon the following facts:

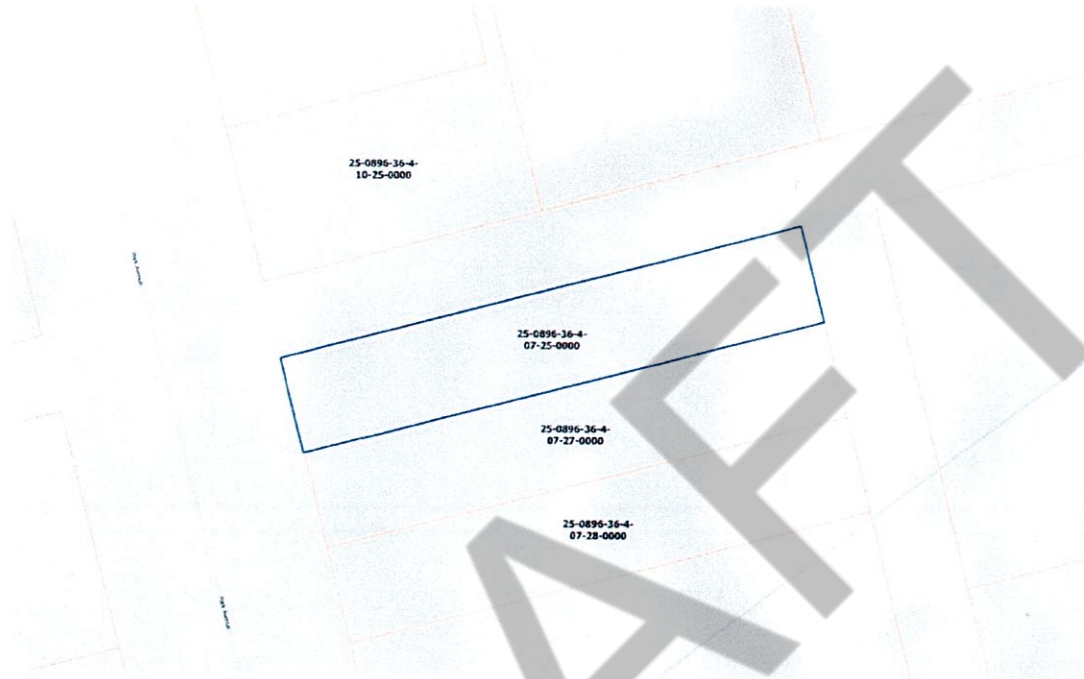
This portion of Alley is Overgrown & Full of Water Runoff (Swamp) making a Future Road unfeasible.

NAME	ADDRESS	SIGNATURE
1. <i>Royce Buines Montana Climate Control</i>	<i>162 Park Avenue PO Box 241 Harrison, MT 59733</i>	<i>[Signature]</i> <i>13-15</i>
2.		
3. <i>Randy & Debra Jacobson</i>	<i>PO Box 221 Harrison, MT 59735 46-48</i>	<i>Randy Jacobson Debra Jacobson</i>
4.		
5.		
6.		
7.		
8.		
9.		
10.		
11.		
12.		
13.		
14.		
15.		

(USE ADDITIONAL PAGES AS NECESSARY)

Tax Year: 2025

Scale: 1:257.96 Basemap: Cadastral Application Base Map



Summary

Primary Information

Property Category: RP

Subcategory: Commercial Property

Geocode: 25-0896-36-4-07-25-0000

Assessment Code: 0014005510

Primary Owner:

MONTANA CLIMATE CONTROL SERVICES INC
PO BOX 241
HARRISON, MT 59735-0241
Note: See Owners section for all owners

Property Address:

162 PARK AVE
HARRISON, MT 59735

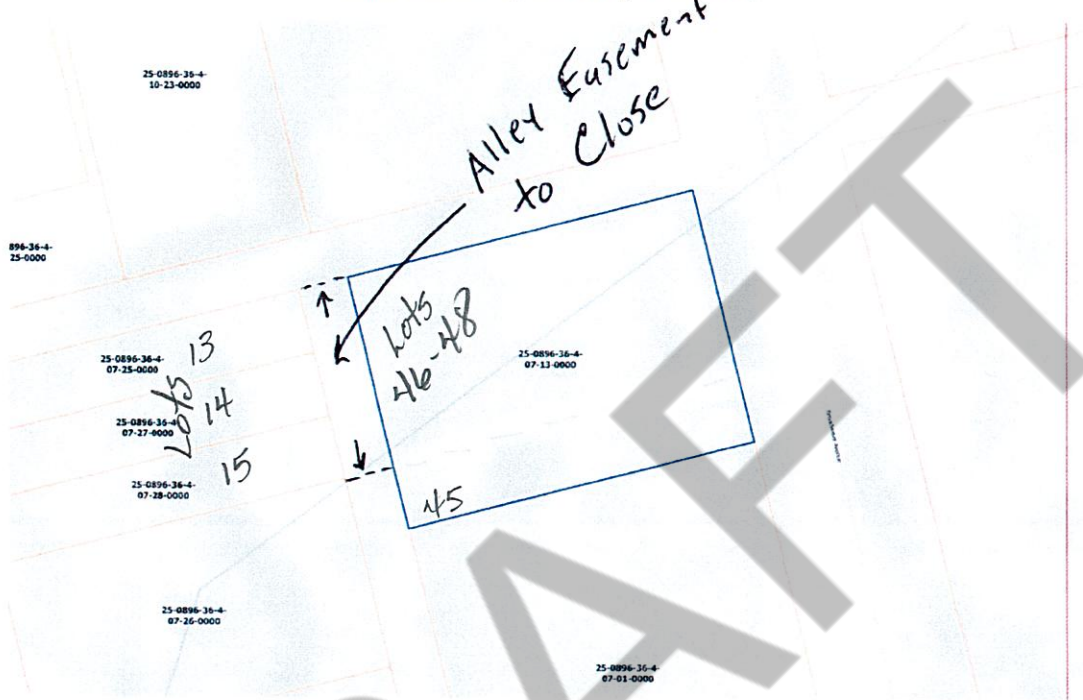
Certificate of Survey:

Legal Description: BRIDGES ADD (HARRISON), S36, T01 S, R02 W, BLOCK 9, Lot 13, PLAT 2/394R

Last Modified: 10/14/2025 19:25:54 PM

Tax Year: 2025

Scale: 1:388.50 Basemap: Cadastral Application Base Map



Summary

Primary Information

Property Category: RP

Subcategory: Residential Property

Geocode: 25-0896-36-4-07-13-0000

Assessment Code: 0014001500

Primary Owner:

JACOBSON RANDY &
PO BOX 221
HARRISON, MT 59735-0221
Note: See Owners section for all owners

Property Address:

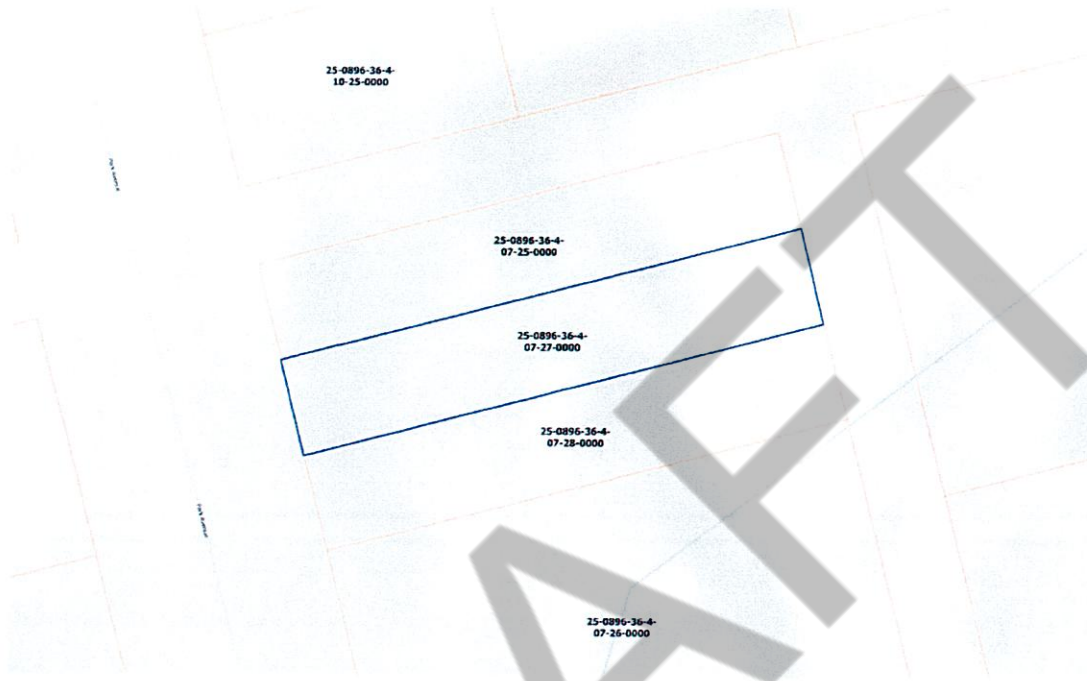
Certificate of Survey:

Legal Description: BRIDGES ADD (HARRISON), S36, T01 S, R02 W, BLOCK 9, Lot 45 - 48

Last Modified: 10/14/2025 19:25:54 PM

Tax Year: 2025

Scale: 1:257.97 Basemap: Cadastral Application Base Map



Summary

Primary Information

Property Category: RP

Subcategory: Commercial Property

Geocode: 25-0896-36-4-07-27-0000

Assessment Code: 0014005520

Primary Owner:

MONTANA CLIMATE CONTROL SERVICES INC
PO BOX 241
HARRISON, MT 59735-0241
Note: See Owners section for all owners

Property Address:

PARK AVE
HARRISON, MT 59735

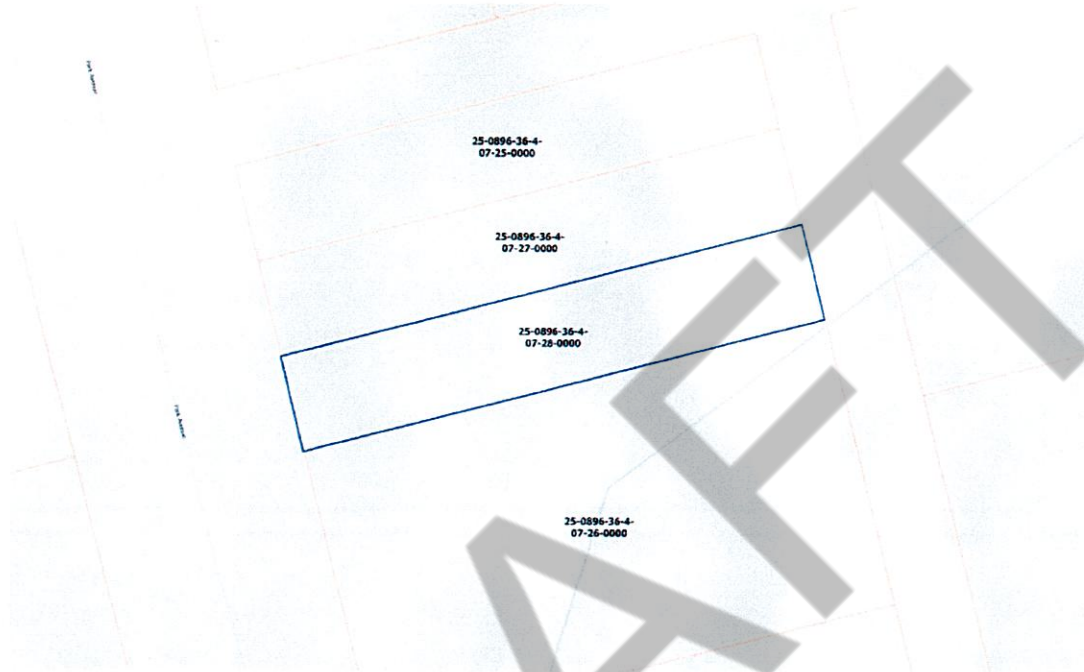
Certificate of Survey:

Legal Description: BRIDGES ADD (HARRISON), S36, T01 S, R02 W, BLOCK 9, Lot 14, PLAT 2/394R

Last Modified: 10/14/2025 19:25:54 PM

Tax Year: 2025

Scale: 1:257.98 Basemap Cadastral Application Base Map



Summary

Primary Information

Property Category: RP

Subcategory: Commercial Property

Geocode: 25-0896-36-4-07-28-0000

Assessment Code: 0014005530

Primary Owner:

MONTANA CLIMATE CONTROL SERVICES INC
PO BOX 241
HARRISON, MT 59735-0241
Note: See Owners section for all owners

Property Address:

PARK AVE
HARRISON, MT 59735

Certificate of Survey:

Legal Description: BRIDGES ADD (HARRISON), S36, T01 S, R02 W, BLOCK 9, Lot 15, PLAT2/394R

Last Modified: 10/14/2025 19:25:54 PM

PUBLIC HEARING NOTICE

The Madison County Board of Commissioners will conduct a public hearing on Tuesday, On January 27, 2026, at 10:00 a.m., in the First Floor Public Meeting Room of the Administrative Office Building in Virginia City, Montana, a public meeting will be held to receive comments on a petition requesting the closure of a section of alley Bridges Add (Harrison), S36, T01 S, R02 W, BLOCK 9, Lots 13-15 and 46 – 48 of the Original Townsite of Pony, Montana. Copies of the petition are available for public review and comment at the Madison County Commissioners' Office.

Comments on the proposal are welcome. Written public comments may be submitted or delivered to the Madison County Commissioners' Office, P.O. Box 278, Virginia City, MT 59755; or emailed to madco@madisoncountymt.gov. Written comments must be received by 5:00 p.m. on January 26, 2026.

Please Publish: 1/8/2026 and 1/15/2026