

RESOLUTION 23-2013

A RESOLUTION FOR ANNEXATION OF UNASSIGNED TERRITORY INTO THE BIG SKY FIRE DISTRICT

WHEREAS, the Madison County Board of Commissioners received and accepted a petition for annexation of unassigned territory for fire protection described in attached Exhibit "A" to the Big Sky Fire District, and

WHEREAS, the Madison County Board of Commissioners held a duly noticed public hearing in Virginia City on September 3rd, 2013 and

WHEREAS, two people spoke in favor of said annexation, and

WHEREAS, zero people spoke out against said annexation, and

WHEREAS, the Madison County Board of Commissioners voted in favor of annexation as noted in the approved minutes of September 10th, 2013.

NOW THEREFORE BE IT RESOLVED that the area, shown on the attached Exhibit A, is hereby annexed from the unassigned fire protection area into the Big Sky Fire District.

APPROVED BY THE BOARD OF COUNTY COMMISSIONERS THIS 10th day of September, 2013

James P. Hart, Chair

David Schulz

Dan A. Happel
Board of Commissioners
Madison County

ATTEST:

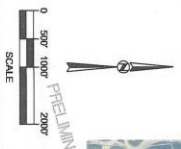
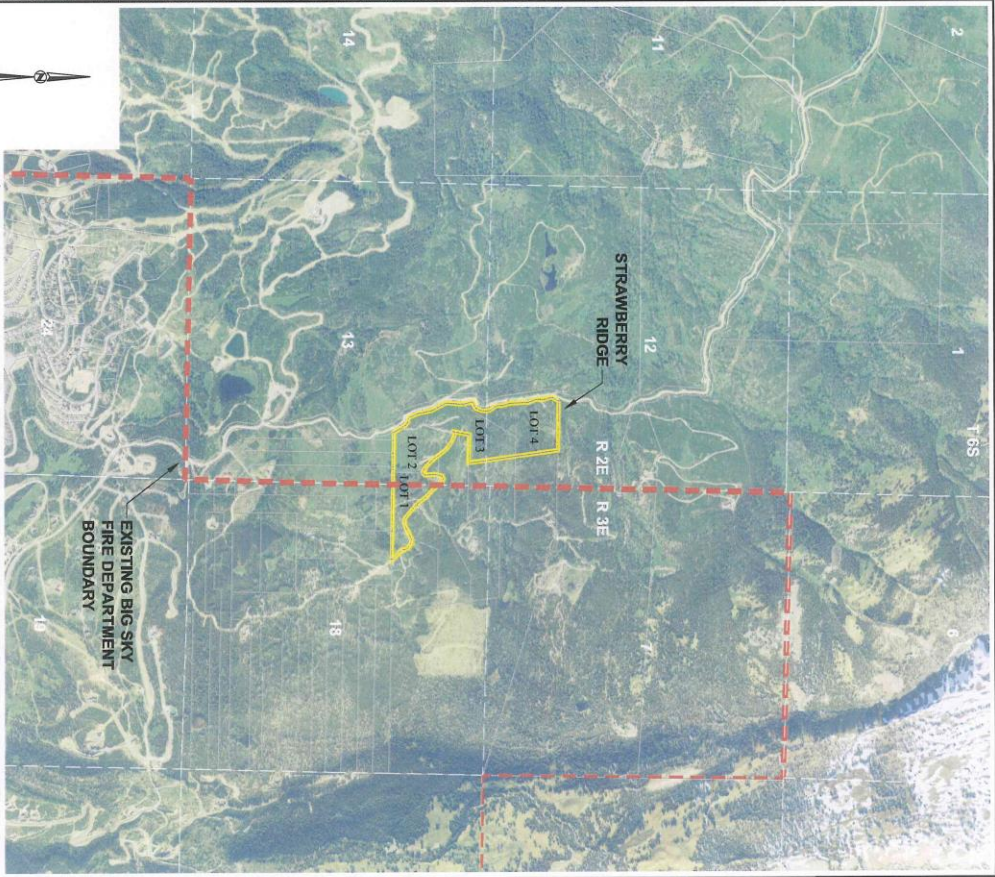
Peggy Kaatz-Stemler
Clerk and Recorder

EXHIBIT A

AREA ANNEXED INTO THE BIG SKY FIRE DISTRICT

Legal Description:

Lots 1, 2, 3 and 4 of Strawberry Ridge (Cowboy Heaven Ph. 4-A), Planned Unit Development, Final Plat, in Madison County, Montana, according to the official plat thereof on file and of record in the office of the County Clerk and Recorder, Madison County, Montana (Plat reference in Book 4 of Plats, Page 547, records of Madison County, Montana).



This map has been created for planning purposes only. It shall only be used for illustrative and orientation purposes and what is represented on the map may change based on planning and development decisions. Unless otherwise stated, it is not intended to permit or authorize any person to perform any act that is prohibited by law. The information contained on this map is for illustrative purposes only and may not accurately portray what currently exists on the site, what is to be developed and/or what is on record or on file with the Madison County Clerk and Recorder or Madison County Planning Department. This map shall not be used as a substitute for the architect's own independent map design or engineering for project development. The user of this map assumes all responsibility for and makes no representation regarding the accuracy of the information portrayed on this map.

MOONLIGHT BASIN MADISON COUNTY, MONTANA		DRAWN BY: JHB DESIGNED BY: NA DATE ISSUED: 3/20/13 PROJECT NAME: SR FD Annex Ex.dwg DRAWN BY: NA PROJECT NO: NA SHEET 1 OF 1	
COWBOY HEAVEN PH. 4-A (STRAWBERRY RIDGE) BIG SKY FIRE ANNEXATION		PLANNING & DEVELOPMENT 2101 SPRINGWOOD DRIVE ENNIS, MT 59729 OFFICE: (406) 825-6666 FAX: (406) 825-7979 WWW.MOONLIGHTBASIN.COM	